

SVENSK STANDARD

SS-ISO 14955-3:2020

**Verktygsmaskiner – Miljöutvärdering av verktygsmaskiner –
Del 4: Principer för mätning av metallbearbetande
verktygsmaskiner och laserbearbetande verktygsmaskiner med
avseende på energieffektivitet (ISO 14955-3:2020, IDT)**

**Machine tools – Environmental evaluation of machine tools –
Part 3: Principles for testing metal-cutting machine tools with
respect to energy efficiency (ISO 14955-3:2020, IDT)**



sis Svenska
Institutet för
Standarder

Language: engelska/English

Edition: 1

This preview is downloaded from www.sis.se. Buy the entire standard via <https://www.sis.se/std-80025241>

Den här standarden kan hjälpa dig att effektivisera och kvalitetssäkra ditt arbete. SIS har fler tjänster att erbjuda dig för att underlätta tillämpningen av standarder i din verksamhet.

SIS Abonnemang

Snabb och enkel åtkomst till gällande standard med SIS Abonnemang, en prenumerationstjänst genom vilken din organisation får tillgång till all världens standarder, senaste uppdateringarna och där hela din organisation kan ta del av innehållet i prenumerationen.

Utbildning, event och publikationer

Vi erbjuder även utbildningar, rådgivning och event kring våra mest sålda standarder och frågor kopplade till utveckling av standarder. Vi ger också ut handböcker som underlättar ditt arbete med att använda en specifik standard.

Vill du delta i ett standardiseringsprojekt?

Genom att delta som expert i någon av SIS 300 tekniska kommittéer inom CEN (europeisk standardisering) och/eller ISO (internationell standardisering) har du möjlighet att påverka standardiseringsarbetet i frågor som är viktiga för din organisation. Välkommen att kontakta SIS för att få veta mer!

Kontakt

Skriv till kundservice@sis.se, besök [sis.se](https://www.sis.se) eller ring 08 - 555 523 10

© Copyright/Upphovsrätten till denna produkt tillhör Svenska institutet för standarder, Stockholm, Sverige. Upphovsrätten och användningen av denna produkt regleras i slutanvändarlicensen som återfinns på [sis.se/slutanvandarlicens](https://www.sis.se/slutanvandarlicens) och som du automatiskt blir bunden av när du använder produkten. För ordlista och förkortningar se [sis.se/ordlista](https://www.sis.se/ordlista).

© Copyright Svenska institutet för standarder, Stockholm, Sweden. All rights reserved. The copyright and use of this product is governed by the end-user licence agreement which you automatically will be bound to when using the product. You will find the licence at [sis.se/enduserlicenseagreement](https://www.sis.se/enduserlicenseagreement).

Upplysningar om sakinnehållet i standarden lämnas av Svenska institutet för standarder, telefon 08 - 555 520 00. Standarder kan beställas hos SIS som även lämnar allmänna upplysningar om svensk och utländsk standard.

Standarden är framtagen av kommittén för Uppmätning av verktygsmaskiner, SIS/TK 491.

Har du synpunkter på innehållet i den här standarden, vill du delta i ett kommande revideringsarbete eller vara med och ta fram andra standarder inom området? Gå in på www.sis.se - där hittar du mer information.

Den internationella standarden ISO 14955-3:2020 gäller som svensk standard. Detta dokument innehåller den officiella engelska versionen av ISO 14955-3:2020.

The International Standard ISO 14955-3:2020 has the status of a Swedish Standard. This document contains the official English version of ISO 14955-3:2020.

Contents

Page

Foreword	vi
Introduction	vii
1 Scope	1
2 Normative references	1
3 Terms and definitions	1
4 General approach for the environmental evaluation of machine tools	3
4.1 General	3
4.2 Step 1 — Documentation of general information.....	4
4.3 Step 2 – Measurement of machine tool state OFF — M01	4
4.3.1 Description.....	4
4.3.2 Measurements	4
4.3.3 Documentation.....	5
4.4 Step 3 — Measurement of transition from machine tool state OFF to STANDBY (START) — M02.....	5
4.4.1 Description.....	5
4.4.2 Measurements	5
4.4.3 Documentation.....	6
4.5 Step 4 — Measurement of machine tool state STANDBY — M03.....	6
4.5.1 Description.....	6
4.5.2 Measurements	6
4.5.3 Documentation.....	7
4.6 Step 5 — Measurement of machine tool state SETUP/WARMUP — M04	7
4.6.1 Description.....	7
4.6.2 Measurements	7
4.6.3 Documentation.....	8
4.7 Step 6 — Measurement of machine tool state READY — M05	8
4.7.1 Description.....	8
4.7.2 Measurements	8
4.7.3 Documentation.....	9
4.8 Step 7 — Measurement of machine tool state PROCESSING — M06.....	9
4.8.1 Description.....	9
4.8.2 Measurements	9
4.8.3 Documentation.....	10
4.9 Step 8 — Measurement of machine tool state EMERGENCY STOP — M07.....	10
4.9.1 Description.....	10
4.9.2 Measurements	10
4.9.3 Documentation.....	11
4.10 Step 9 — Measurement of transition from machine tool state STANDBY to OFF — M08	11
4.10.1 Description.....	11
4.10.2 Measurements	12
4.10.3 Documentation.....	12
5 Machine tool analysis for environmental evaluation	12
5.1 General	12
5.2 Average machine tool performance.....	13
5.2.1 General.....	13
5.2.2 Approach.....	13
5.2.3 Estimated energy supplied	14
5.2.4 Calculation of relevant operation states.....	15
5.2.5 Relevant values	16
5.2.6 Functional oriented analysis.....	17
6 Machine tool reference scenario	19

6.1	General	19
6.2	General structure	20
6.2.1	General	20
6.2.2	Preparation	21
6.3	Guide for the definition of the reference scenario.....	21
6.4	Definition of a reference scenario	22
6.4.1	General.....	22
6.4.2	Machining process	23
6.4.3	Tools.....	23
6.4.4	Workpiece material and process parameters	23
6.4.5	Variation of process parameters	23
6.5	Major machine tool operating states.....	23
6.6	Relevant test scenarios.....	24
6.7	Documentation of reference scenario.....	24
Annex A (informative) Example for grinding machine tool		25
Bibliography		34

Foreword

ISO (the International Organization for Standardization) is a worldwide federation of national standards bodies (ISO member bodies). The work of preparing International Standards is normally carried out through ISO technical committees. Each member body interested in a subject for which a technical committee has been established has the right to be represented on that committee. International organizations, governmental and non-governmental, in liaison with ISO, also take part in the work. ISO collaborates closely with the International Electrotechnical Commission (IEC) on all matters of electrotechnical standardization.

The procedures used to develop this document and those intended for its further maintenance are described in the ISO/IEC Directives, Part 1. In particular, the different approval criteria needed for the different types of ISO documents should be noted. This document was drafted in accordance with the editorial rules of the ISO/IEC Directives, Part 2 (see www.iso.org/directives).

Attention is drawn to the possibility that some of the elements of this document may be the subject of patent rights. ISO shall not be held responsible for identifying any or all such patent rights. Details of any patent rights identified during the development of the document will be in the Introduction and/or on the ISO list of patent declarations received (see www.iso.org/patents).

Any trade name used in this document is information given for the convenience of users and does not constitute an endorsement.

For an explanation of the voluntary nature of standards, the meaning of ISO specific terms and expressions related to conformity assessment, as well as information about ISO's adherence to the World Trade Organization (WTO) principles in the Technical Barriers to Trade (TBT) see www.iso.org/iso/foreword.html.

This document was prepared by Technical Committee ISO/TC 39, *Machine tools*.

Any feedback or questions on this document should be directed to the user's national standards body. A complete listing of these bodies can be found at www.iso.org/members.html.

A list of all parts in the ISO 14955 series can be found on the ISO website.

Introduction

Machine tools are complex products for industrial use to manufacture parts ready for use or semi-finished products. The performance of a machine tool as key data for investment is multi-dimensional regarding its economic value, its technical specification, and its operating requirements which are influenced by the specific application. Therefore, the same machine tool can show quite different energy supplied to the machine depending on the part which is manufactured and the conditions under which the machine is operated. Therefore, the environmental evaluation of a machine tool cannot be considered in isolation from these considerations.

ISO 14955-1 defines an analysis and evaluation procedure for machine tools based on functional units with the intention of a unified approach. ISO 14955-1 enables simplified and general evaluation methods in order to define and assess the energetic behaviour and the individual energetic and/or efficiency weaknesses of a machine tool.

ISO 14955-2 defines the required parameters and procedures for machine tool and machine tool component measurement, including required parameters which are relevant for the assessment of the energetic machine tool behaviour.

The reference scenario introduced in this part reflects the actual machine process in the field under best knowledge. The definition of the reference scenario and its measurement helps to indicate application-dependent improvement potential and the application of the methodology as defined in ISO 14955-1 and related improvement measures for given industrially driven applications.

The ISO 14955 series takes care of relevant environmental impacts during the use stage. Aside from the design and engineering of machine tools, the intended utilization of machine tools is addressed by this document.

Machine tools — Environmental evaluation of machine tools —

Part 3:

Principles for testing metal-cutting machine tools with respect to energy efficiency

1 Scope

This document supports the energy-saving design methodology according to ISO 14955-1 and the methods for measuring energy supplied to machine tools and machine tool components defined in ISO 14955-2. This document addresses the environmental evaluation of machine tools during the use stage based on reference scenarios. It contains an example for metal cutting machine tools.

This document defines a methodological approach to assess relevant machine tool operating states based on an individual reference scenario for the energy assessment of machine tools and the integration of energy-efficiency aspects into machine tool design.

This document explains what needs to be measured in line with ISO 14955-1 and ISO 14955-2. Furthermore, it shows how a reference scenario for the measurement of the machine function “processing”, according to ISO 14955-1, is evaluated.

An example of how to use this document is given in [Annex A](#).

The results from applying this document are influenced by the effect of user behaviour and manufacturing strategies during the use phase. This document does not support the comparison of machine tools.

2 Normative references

The following documents are referred to in the text in such a way that some or all of their content constitutes requirements of this document. For dated references, only the edition cited applies. For undated references, the latest edition of the referenced document (including any amendments) applies.

ISO 14955-1:2017, *Machine tools — Environmental evaluation of machine tools — Part 1: Design methodology for energy-efficient machine tools*

ISO 14955-2:2018, *Machine tools — Environmental evaluation of machine tools — Part 2: Methods for measuring energy supplied to machine tools and machine tool components*

DIN 8580:2003, *Manufacturing processes — Terms and definitions, division*

3 Terms and definitions

For the purposes of this document, the terms and definitions given in ISO 14955-1, ISO 14955-2 and the following apply.

ISO and IEC maintain terminological databases for use in standardization at the following addresses:

- ISO Online browsing platform: available at <https://www.iso.org/obp>
- IEC Electropedia: available at <http://www.electropedia.org/>

SS-ISO 14955-3:2020 (E)

3.1 reference part

workpiece with defined specification of geometry, material, size, geometric tolerances, surface quality and defined related manufacturing procedure

Note 1 to entry: The reference part is a determined number of geometric elements in given composition and dimension which are manufactured under defined operating states (see [8]).

3.2 reference scenario

individually defined manufacturing process, containing the definition of part handling and the environmental conditions to achieve an individual *reference part* (3.1)

Note 1 to entry: The reference scenario covers machine based and task-based scenarios according to ISO 14955-2:2018.

3.3 discrete part manufacturing

production process in which its output is individually countable, or identifiable by serial numbers, and is measurable in distinct units rather than by weight or volume

Note 1 to entry: Term used in distinction to process manufacturing, e.g. of substances such as plastics, food, beverages or pharmaceuticals.

3.4 mass production large-scale production

manufacturing of large quantities of standardized products, frequently utilizing assembly line technology

Note 1 to entry: Mass production refers to the process of creating large numbers of similar products efficiently. Mass production is typically characterized by some type of automation, as with an assembly line, to achieve high volume, the detailed organization of materials flow, careful control of quality standards and division of labour.

3.5 tool

device for imparting a desired shape, form, or finish to a material

Note 1 to entry: The desired shape can be achieved by different means, e.g. by material removal, forming, shaping.

3.6 shop floor production

job shop
fabrication-outfit specializing in small quantities of custom-made parts, produced according to customer specifications

Note 1 to entry: Usually, in shop floor production, there is no workpiece defined between machine tool builder/supplier and machine tool user at the time of machine tool acquisition.

Note 2 to entry: In shop floor production, time shares are strongly related to the specific production being executed. A typical utilization of a machine tool in a shop floor production is 8 h/day for 5 days/week.

3.7 energy performance indicator EnPI

measure or unit of energy performance, as defined by the organization

Note 1 to entry: EnPI(s) can be expressed by using a simple metric, ratio or a model, depending on the nature of the activities being measured.

Note 2 to entry: See ISO 50006 for additional information on EnPI(s)[4].

Note 3 to entry: Examples for organizations are manufacturer, supplier and user.

[SOURCE: ISO 50001:2018, 3.4.4]

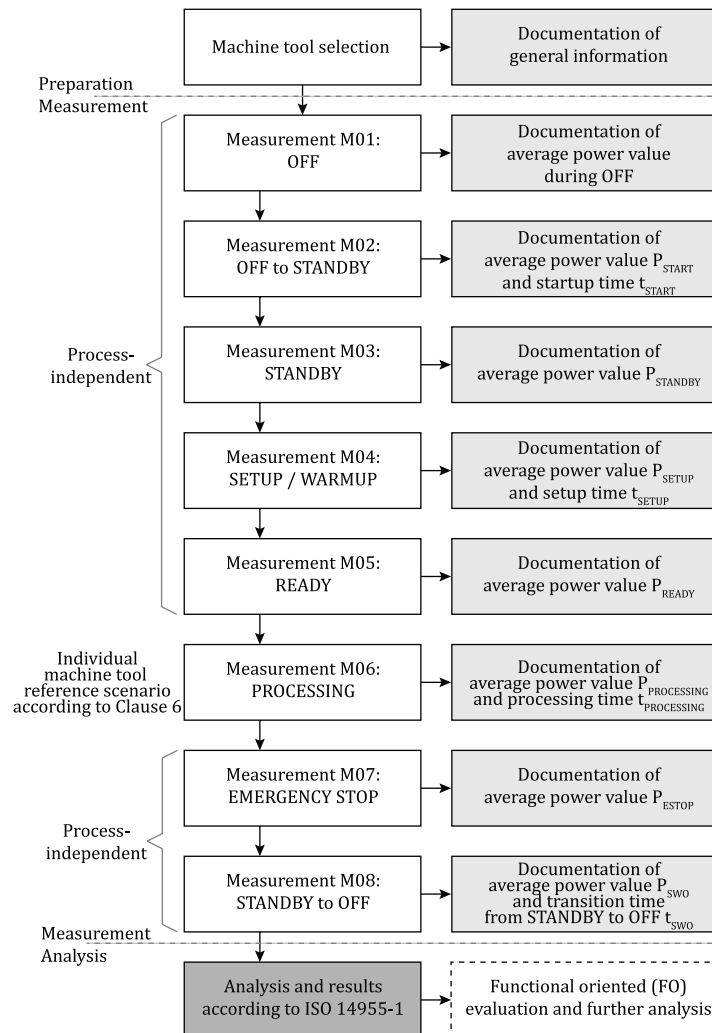
4 General approach for the environmental evaluation of machine tools

4.1 General

This clause describes the procedure for the environmental evaluation of machine tools according to ISO 14955-1. This approach requires the measurement of all possible operating states of the machine tool, including the reference scenario, as defined in Clause 6. Based on this assessment, relevant machine tool operating states can be indicated and assessed and the functional oriented analysis according to ISO 14955-1 can be performed.

Stable conditions are assumed if the difference of the average of the measured value over two measurement periods is not larger than 100 W or $\pm 5\%$ of the connected load (nominal power).

Figure 1 shows the general approach for the environmental evaluation of machine tools. Detailed information is given in 4.2 to 4.10. Clause 5 shows the results and further assessments based on the performed machine tool measurement.



NOTE STANDBY is a stable state after machine tool is turned ON. This state can include heating on some machine tools.

Figure 1 — General approach for the environmental evaluation of machine tools