

SVENSK STANDARD

SS-EN 13071-2:2019



Fastställt/Approved: 2019-07-15
Utgåva/Edition: 2
Språk/Language: engelska/English
ICS: 13.030.40

Stationära avfallsbehållare med volymer upp till 5 000 l, topplyfta och bottentömda – Del 2: Tilläggskrav för underjordiska eller delvis underjordiska system

**Stationary waste containers up to 5 000 l, top lifted and bottom emptied –
Part 2: Additional requirements for underground or partly underground systems**



Standarder får världen att fungera

SIS (Swedish Standards Institute) är en fristående ideell förening med medlemmar från både privat och offentlig sektor. Vi är en del av det europeiska och globala nätverk som utarbetar internationella standarder. Standarder är dokumenterad kunskap utvecklad av framstående aktörer inom industri, näringsliv och samhälle och befrämjar handel över gränser, bidrar till att processer och produkter blir säkrare samt effektiviserar din verksamhet.

Delta och påverka

Som medlem i SIS har du möjlighet att påverka framtida standarder inom ditt område på nationell, europeisk och global nivå. Du får samtidigt tillgång till tidig information om utvecklingen inom din bransch.

Ta del av det färdiga arbetet

Vi erbjuder våra kunder allt som rör standarder och deras tillämpning. Hos oss kan du köpa alla publikationer du behöver – allt från enskilda standarder, tekniska rapporter och standardpaket till handböcker och onlinetjänster. Genom vår webbtjänst e-nav får du tillgång till ett lättnavigerat bibliotek där alla standarder som är aktuella för ditt företag finns tillgängliga. Standarder och handböcker är källor till kunskap. Vi säljer dem.

Utveckla din kompetens och lyckas bättre i ditt arbete

Hos SIS kan du gå öppna eller företagsinterna utbildningar kring innehåll och tillämpning av standarder. Genom vår närhet till den internationella utvecklingen och ISO får du rätt kunskap i rätt tid, direkt från källan. Med vår kunskap om standarders möjligheter hjälper vi våra kunder att skapa verklig nytta och lönsamhet i sina verksamheter.

Vill du veta mer om SIS eller hur standarder kan effektivisera din verksamhet är du välkommen in på www.sis.se eller ta kontakt med oss på tel 08-555 523 00.



Standards make the world go round

SIS (Swedish Standards Institute) is an independent non-profit organisation with members from both the private and public sectors. We are part of the European and global network that draws up international standards. Standards consist of documented knowledge developed by prominent actors within the industry, business world and society. They promote cross-border trade, they help to make processes and products safer and they streamline your organisation.

Take part and have influence

As a member of SIS you will have the possibility to participate in standardization activities on national, European and global level. The membership in SIS will give you the opportunity to influence future standards and gain access to early stage information about developments within your field.

Get to know the finished work

We offer our customers everything in connection with standards and their application. You can purchase all the publications you need from us - everything from individual standards, technical reports and standard packages through to manuals and online services. Our web service e-nav gives you access to an easy-to-navigate library where all standards that are relevant to your company are available. Standards and manuals are sources of knowledge. We sell them.

Increase understanding and improve perception

With SIS you can undergo either shared or in-house training in the content and application of standards. Thanks to our proximity to international development and ISO you receive the right knowledge at the right time, direct from the source. With our knowledge about the potential of standards, we assist our customers in creating tangible benefit and profitability in their organisations.

If you want to know more about SIS, or how standards can streamline your organisation, please visit www.sis.se or contact us on phone +46 (0)8-555 523 00



Europastandarden EN 13071-2:2019 gäller som svensk standard. Detta dokument innehåller den officiella engelska versionen av EN 13071-2:2019.

Denna standard ersätter SS-EN 13071-2:2008+A1:2013, utgåva 1.

The European Standard EN 13071-2:2019 has the status of a Swedish Standard. This document contains the official version of EN 13071-2:2019.

This standard supersedes the SS-EN 13071-2:2008+A1:2013, edition 1.

© Copyright/Upphovsrätten till denna produkt tillhör SIS, Swedish Standards Institute, Stockholm, Sverige. Användningen av denna produkt regleras av slutanvändarlicensen som återfinns i denna produkt, se standardens sista sidor.

© Copyright SIS, Swedish Standards Institute, Stockholm, Sweden. All rights reserved. The use of this product is governed by the end-user licence for this product. You will find the licence in the end of this document.

Upplysningar om sakinnehållet i standarden lämnas av SIS, Swedish Standards Institute, telefon 08-555 520 00. Standarder kan beställas hos SIS som även lämnar allmänna upplysningar om svensk och utländsk standard.

Information about the content of the standard is available from the Swedish Standards Institute (SIS), telephone +46 8 555 520 00. Standards may be ordered from SIS, who can also provide general information about Swedish and foreign standards.

Denna standard är framtagen av kommittén för Utrustning för avfallshantering, SIS/TK 252.

Har du synpunkter på innehållet i den här standarden, vill du delta i ett kommande revideringsarbete eller vara med och ta fram andra standarder inom området? Gå in på www.sis.se - där hittar du mer information.

EUROPEAN STANDARD

EN 13071-2

NORME EUROPÉENNE

EUROPÄISCHE NORM

July 2019

ICS 13.030.40

Supersedes EN 13071-2:2008+A1:2013

English Version

Stationary waste containers up to 5 000 l, top lifted and bottom emptied - Part 2: Additional requirements for underground or partly underground systems

Conteneurs fixes à déchets de capacité inférieure ou égale à 5 000 l, levés par le haut et vidés par le bas -
Partie 2 : Exigences complémentaires relatives aux systèmes enterrés ou semi-enterrés

Stationäre Abfallsammelbehälter bis 5 000 l, mit Behälteraufnahme an der Oberseite und Bodenentleerung - Teil 2: Zusätzliche Anforderungen für unterirdische oder teilweise unterirdische Systeme

This European Standard was approved by CEN on 19 May 2019.

CEN members are bound to comply with the CEN/CENELEC Internal Regulations which stipulate the conditions for giving this European Standard the status of a national standard without any alteration. Up-to-date lists and bibliographical references concerning such national standards may be obtained on application to the CEN-CENELEC Management Centre or to any CEN member.

This European Standard exists in three official versions (English, French, German). A version in any other language made by translation under the responsibility of a CEN member into its own language and notified to the CEN-CENELEC Management Centre has the same status as the official versions.

CEN members are the national standards bodies of Austria, Belgium, Bulgaria, Croatia, Cyprus, Czech Republic, Denmark, Estonia, Finland, France, Germany, Greece, Hungary, Iceland, Ireland, Italy, Latvia, Lithuania, Luxembourg, Malta, Netherlands, Norway, Poland, Portugal, Republic of North Macedonia, Romania, Serbia, Slovakia, Slovenia, Spain, Sweden, Switzerland, Turkey and United Kingdom.



EUROPEAN COMMITTEE FOR STANDARDIZATION
COMITÉ EUROPÉEN DE NORMALISATION
EUROPÄISCHES KOMITEE FÜR NORMUNG

CEN-CENELEC Management Centre: Rue de la Science 23, B-1040 Brussels

Contents	Page
European foreword.....	3
Introduction	4
1 Scope.....	5
2 Normative references.....	5
3 Terms and definitions	5
Figure 1 — Underground and partly underground systems	6
4 Requirements.....	7
4.1 General requirements	7
4.2 Design.....	7
4.3 Safety requirements.....	8
4.3.1 Hole	8
4.3.2 Pedestrian platform	8
4.3.3 Safety platform.....	8
4.3.4 Safety barrier.....	8
5 Test conditions.....	8
6 Test procedures.....	8
6.1 Tests conducted on the container	8
6.2 Specific tests conducted on underground and partly underground systems	9
6.2.1 Resistance of the safety barrier	9
6.2.2 Resistance of the safety platform	9
6.2.3 Functionality of the safety platform and safety barrier.....	9
6.2.4 Resistance of the pedestrian platform	10
6.2.5 Resistance of the emergent part and column to exterior impacts	10
Figure 2 — Example of resistance of emergent part to exterior impacts	11
6.3 Corrosion.....	11
6.4 Weathering (for thermoplastics only).....	11
6.4.1 Requirement.....	11
6.4.2 Procedure.....	11
6.5 Sequence of tests.....	12
Table 1 — Sequence of the tests.....	12
7 Data sheet	12
8 Marking.....	12
9 Test report.....	12
Annex A (informative) A-deviations	13
Bibliography.....	14

European foreword

This document (EN 13071-2:2019) has been prepared by Technical Committee CEN/TC 183 “Waste management”, the secretariat of which is held by DIN.

This European Standard shall be given the status of a national standard, either by publication of an identical text or by endorsement, at the latest by January 2020, and conflicting national standards shall be withdrawn at the latest by January 2020.

Attention is drawn to the possibility that some of the elements of this document may be the subject of patent rights. CEN shall not be held responsible for identifying any or all such patent rights.

This document supersedes EN 13071-2:2008+A1:2013.

The main changes compared to the previous edition are listed below:

- a) addition of an introduction;
- b) review of definitions 3.2 and 3.7;
- c) replacement of term „housing“ with „column“ (3.4);
- d) addition of further requirements for the design (4.2);
- e) updating of safety requirements for holes (4.3.1), pedestrian platforms (4.3.2), safety platforms (4.3.3), and safety barrier (4.3.4);
- f) deletion of clause 7 “Recommendations”.

According to the CEN-CENELEC Internal Regulations, the national standards organisations of the following countries are bound to implement this European Standard: Austria, Belgium, Bulgaria, Croatia, Cyprus, Czech Republic, Denmark, Estonia, Finland, Former Yugoslav Republic of Macedonia, France, Germany, Greece, Hungary, Iceland, Ireland, Italy, Latvia, Lithuania, Luxembourg, Malta, Netherlands, Norway, Poland, Portugal, Romania, Serbia, Slovakia, Slovenia, Spain, Sweden, Switzerland, Turkey and the United Kingdom.

SS-EN 13071-2:2019 (E)

Introduction

According to the European health and safety requirements, work equipment have to be designed and constructed so that it can be operated without putting persons at risk. The manufacturer has to consider the intended conditions of use, but also any reasonably foreseeable misuse.

For that purpose he will carry out a risk analysis in order to determine the hazards which the operators and users are exposed to. The equipment will then be designed and constructed taking into account the results of this assessment, by an iterative process of risk assessment and risk reduction.

As specified in the guidance document “Classification of equipment used for lifting loads with lifting machinery” (Machinery Working Group — January 2012), containers used for collecting and lifting bulk material are not covered by Directive 2006/42/CE.

However, a large number of the hazards which the operators using such equipment and the persons present in the vicinity of lifting/handling operations are exposed to are the same as those resulting from the use of lifting appliances proper.

These are the reasons why CEN/TC 183 decided to include into this standard requirements intended to support the corresponding essential health and safety requirements of Directive 2006/42, in particular those related to lifting operations (part 4 of Annex I).

1 Scope

This document specifies the additional requirements for underground or partly underground systems top lifted and bottom emptied, used for collection of solid non-hazardous wastes with a capacity up to 5 000 l.

2 Normative references

The following documents are referred to in the text in such a way that some or all of their content constitutes requirements of this document. For dated references, only the edition cited applies. For undated references, the latest edition of the referenced document (including any amendments) applies.

EN 13071-1:2019, *Stationary waste containers up to 5 000 l, top lifted and bottom emptied — Part 1: General requirements*

EN 10346, *Continuously hot-dip coated steel flat products for cold forming — Technical delivery conditions*

EN ISO 1461, *Hot dip galvanized coatings on fabricated iron and steel articles — Specifications and test methods (ISO 1461)*

EN ISO 2081, *Metallic and other inorganic coatings — Electroplated coatings of zinc with supplementary treatments on iron or steel*

3 Terms and definitions

For the purposes of this document, the terms and definitions given in EN 13071-1:2019 and the following apply.

ISO and IEC maintain terminological databases for use in standardization at the following addresses:

- IEC Electropedia: available at <http://www.electropedia.org/>
- ISO Online browsing platform: available at <http://www.iso.org/obp>

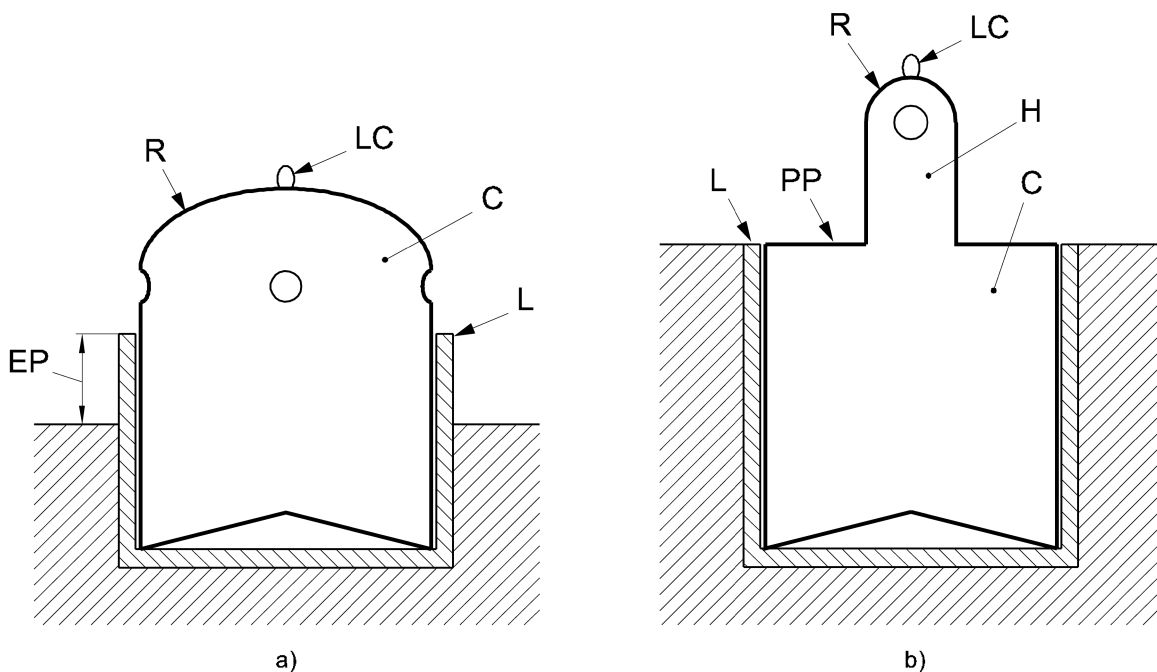
3.1

underground or partly underground system

waste container with an emptying device located below surrounding ground level at any point

Note 1 to entry: See Figure 1. Safety devices are not shown in Figure 1.

SS-EN 13071-2:2019 (E)



Key

- C underground or partly underground container
- EP emergent part
- H column
- L liner
- LC lifting connection
- PP pedestrian platform
- R roof

Figure 1 — Underground and partly underground systems

3.2 underground or partly underground container

mobile receptacle of underground or partly underground system, designated to collect/receive the waste

3.3

liner

equipment installed fully or partly in the ground, whose function is to receive the container

3.4

column

part above ground level, that is used to fill the underground or partly underground container

3.5

pedestrian platform

part of the system to which the column is fixed or not and is used by pedestrians to walk on to fill the underground container

3.6

emergent part

part of the liner that permanently emerges from surrounding ground level

3.7

hole

open installed body below ground level that is left by the container when it is removed from the liner in case there is no emergent part

3.8

safety barrier

moving part of the system that prevents accidental access to the hole left by the container when it is removed from the liner

3.9

safety platform

moving part of the system that covers the hole left by the container when it is removed from the liner

4 Requirements

4.1 General requirements

See EN 13071-1:2019.

4.2 Design

The liner shall be resistant to withstand ground pressure and shall be secured against floating or sinking.

The liner shall be resistant to ground pressure during emptying operations due to the proximity of the collection vehicle.

The liner shall be waterproof; it shall be designed and built to allow easy cleaning and pumping out of any fluids that could leak from the container.

The container shall retain residual liquids up to a minimum of 2 % of the usable volume. This requirement does not apply to flexible containers.

Due to the fact that lifting cranes do not always lift on a constant vertical axis (this requirement does not apply to flexible containers):

- a functional space shall be present between the container and the liner;
- the container shall be constructed such as it resists to horizontal efforts and frictions during lifting operations.

All components participating to a safe process shall be resistant to all weather conditions, moisture and dirt that could negatively affect their functionality.

For maintenance and cleaning, all parts of the underground or partly underground system shall be easily accessible.

If present, the pedestrian platform shall be designed in order to prevent accidental slipping and tripping of pedestrians.

The container should have an area, e.g. for a sticker or a device, able to give the last maintenance date.