

# SVENSK STANDARD

## SS-EN ISO 3661:2011

Fastställt/Approved: 2011-01-11  
Publicerad/Published: 2011-02-09  
Utgåva/Edition: 1  
Språk/Language: engelska/English  
ICS: 23.080

---

### **Pumpar – Centrifugalpumpar med axiellt inlopp – Bottenplattor och inbyggnadsmått (ISO 3661:1977)**

### **End-suction centrifugal pumps – Baseplate and installation dimensions (ISO 3661:1977)**



# Standarder får världen att fungera

*SIS (Swedish Standards Institute) är en fristående ideell förening med medlemmar från både privat och offentlig sektor. Vi är en del av det europeiska och globala nätverk som utarbetar internationella standarder. Standarder är dokumenterad kunskap utvecklad av framstående aktörer inom industri, näringsliv och samhälle och befrämjar handel över gränser, bidrar till att processer och produkter blir säkrare samt effektiviserar din verksamhet.*

## Delta och påverka

Som medlem i SIS har du möjlighet att påverka framtida standarder inom ditt område på nationell, europeisk och global nivå. Du får samtidigt tillgång till tidig information om utvecklingen inom din bransch.

## Ta del av det färdiga arbetet

Vi erbjuder våra kunder allt som rör standarder och deras tillämpning. Hos oss kan du köpa alla publikationer du behöver – allt från enskilda standarder, tekniska rapporter och standardpaket till handböcker och onlinetjänster. Genom vår webbtjänst e-nav får du tillgång till ett lättnavigerat bibliotek där alla standarder som är aktuella för ditt företag finns tillgängliga. Standarder och handböcker är källor till kunskap. Vi säljer dem.

## Utveckla din kompetens och lyckas bättre i ditt arbete

Hos SIS kan du gå öppna eller företagsinterna utbildningar kring innehåll och tillämpning av standarder. Genom vår närhet till den internationella utvecklingen och ISO får du rätt kunskap i rätt tid, direkt från källan. Med vår kunskap om standarders möjligheter hjälper vi våra kunder att skapa verklig nytta och lönsamhet i sina verksamheter.

**Vill du veta mer om SIS eller hur standarder kan effektivisera din verksamhet är du välkommen in på [www.sis.se](http://www.sis.se) eller ta kontakt med oss på tel 08-555 523 00.**



# Standards make the world go round

*SIS (Swedish Standards Institute) is an independent non-profit organisation with members from both the private and public sectors. We are part of the European and global network that draws up international standards. Standards consist of documented knowledge developed by prominent actors within the industry, business world and society. They promote cross-border trade, they help to make processes and products safer and they streamline your organisation.*

## Take part and have influence

As a member of SIS you will have the possibility to participate in standardization activities on national, European and global level. The membership in SIS will give you the opportunity to influence future standards and gain access to early stage information about developments within your field.

## Get to know the finished work

We offer our customers everything in connection with standards and their application. You can purchase all the publications you need from us - everything from individual standards, technical reports and standard packages through to manuals and online services. Our web service e-nav gives you access to an easy-to-navigate library where all standards that are relevant to your company are available. Standards and manuals are sources of knowledge. We sell them.

## Increase understanding and improve perception

With SIS you can undergo either shared or in-house training in the content and application of standards. Thanks to our proximity to international development and ISO you receive the right knowledge at the right time, direct from the source. With our knowledge about the potential of standards, we assist our customers in creating tangible benefit and profitability in their organisations.

**If you want to know more about SIS, or how standards can streamline your organisation, please visit [www.sis.se](http://www.sis.se) or contact us on phone +46 (0)8-555 523 00**



Europastandarden EN ISO 3661:2010 gäller som svensk standard. Detta dokument innehåller den officiella engelska versionen av EN ISO 3661:2010.

Denna standard ersätter SS-EN 23661, utgåva 1 och SS-ISO 3661, utgåva 1.

The European Standard EN ISO 3661:2010 has the status of a Swedish Standard. This document contains the official version of EN ISO 3661:2010.

This standard supersedes the Swedish Standard SS-EN 23661, edition 1 and SS-ISO 3661, edition 1.

© Copyright/Upphovsrätten till denna produkt tillhör SIS, Swedish Standards Institute, Stockholm, Sverige. Användningen av denna produkt regleras av slutanvändarlicensen som återfinns i denna produkt, se standardens sista sidor.

© Copyright SIS, Swedish Standards Institute, Stockholm, Sweden. All rights reserved. The use of this product is governed by the end-user licence for this product. You will find the licence in the end of this document.

*Uppllysningar om sakinnehållet i standarden lämnas av SIS, Swedish Standards Institute, telefon 08-555 520 00. Standarder kan beställas hos SIS Förlag AB som även lämnar allmänna uppllysningar om svensk och utländsk standard.*

*Information about the content of the standard is available from the Swedish Standards Institute (SIS), telephone +46 8 555 520 00. Standards may be ordered from SIS Förlag AB, who can also provide general information about Swedish and foreign standards.*

Denna standard är framtagen av kommittén för Pumpar, SIS/TK 227.

Har du synpunkter på innehållet i den här standarden, vill du delta i ett kommande revideringsarbete eller vara med och ta fram andra standarder inom området? Gå in på [www.sis.se](http://www.sis.se) - där hittar du mer information.



EUROPEAN STANDARD

**EN ISO 3661**

NORME EUROPÉENNE

EUROPÄISCHE NORM

December 2010

ICS 23.080

Supersedes EN 23661:1993

English Version

## End-suction centrifugal pumps - Baseplate and installation dimensions (ISO 3661:1977)

Pompes centrifuges à aspiration en bout - Dimensions relatives aux socles et à l'installation (ISO 3661:1977)

Saugende Kreiselpumpen - Grundplatten- und Montagemaße (ISO 3661:1977)

This European Standard was approved by CEN on 4 December 2010.

CEN members are bound to comply with the CEN/CENELEC Internal Regulations which stipulate the conditions for giving this European Standard the status of a national standard without any alteration. Up-to-date lists and bibliographical references concerning such national standards may be obtained on application to the CEN-CENELEC Management Centre or to any CEN member.

This European Standard exists in three official versions (English, French, German). A version in any other language made by translation under the responsibility of a CEN member into its own language and notified to the CEN-CENELEC Management Centre has the same status as the official versions.

CEN members are the national standards bodies of Austria, Belgium, Bulgaria, Croatia, Cyprus, Czech Republic, Denmark, Estonia, Finland, France, Germany, Greece, Hungary, Iceland, Ireland, Italy, Latvia, Lithuania, Luxembourg, Malta, Netherlands, Norway, Poland, Portugal, Romania, Slovakia, Slovenia, Spain, Sweden, Switzerland and United Kingdom.



EUROPEAN COMMITTEE FOR STANDARDIZATION  
COMITÉ EUROPÉEN DE NORMALISATION  
EUROPÄISCHES KOMITEE FÜR NORMUNG

Management Centre: Avenue Marnix 17, B-1000 Brussels

## Foreword

The text of ISO 3661:1977 has been prepared by Technical Committee ISO/TC 115 "Pumps" of the International Organization for Standardization (ISO) and has been taken over as EN ISO 3661:2010 by Technical Committee CEN/TC 197 "Pumps" the secretariat of which is held by AFNOR.

This European Standard shall be given the status of a national standard, either by publication of an identical text or by endorsement, at the latest by June 2011, and conflicting national standards shall be withdrawn at the latest by June 2011.

Attention is drawn to the possibility that some of the elements of this document may be the subject of patent rights. CEN [and/or CENELEC] shall not be held responsible for identifying any or all such patent rights.

This document supersedes EN 23661:1993.

This document replaces and cancels the EN 23661 "End-suction centrifugal pumps - Baseplate and installation dimensions (ISO 3661:1977) - German version EN 23661:1993": its content is identical to the EN 23661, only the numbering of the standard has been changed, to be consistent with the ISO collection numbering.

Attention is drawn on the fact that some references cited in the standard have evolved:

ISO/R 273 replaced by ISO 273(all parts).

IEC Publication 72 replaced by IEC 60072-1.

According to the CEN/CENELEC Internal Regulations, the national standards organizations of the following countries are bound to implement this European Standard: Austria, Belgium, Bulgaria, Croatia, Cyprus, Czech Republic, Denmark, Estonia, Finland, France, Germany, Greece, Hungary, Iceland, Ireland, Italy, Latvia, Lithuania, Luxembourg, Malta, Netherlands, Norway, Poland, Portugal, Romania, Slovakia, Slovenia, Spain, Sweden, Switzerland and the United Kingdom.

### Endorsement notice

The text of ISO 3661:1977 has been approved by CEN as a EN ISO 3661:2010 without any modification.

# End-suction centrifugal pumps — Baseplate and installation dimensions

## 1 SCOPE

This International Standard specifies the basic baseplate and installation dimensions for end-suction centrifugal pumps. Alternative numbers and locations of baseplate fixing holes are given to suit individual installations.

## 2 FIELD OF APPLICATION

The dimensions and other data given in this International Standard are intended primarily for use with centrifugal pumps in accordance with ISO 2858, coupled to foot-mounted electric motors for installation on a foundation.

Where suitable, this International Standard may be used for other types of pump.

## 3 REFERENCES

ISO/R 273, *Clearance holes for metric bolts.*

ISO 2858, *End-suction centrifugal pumps (rating 16 bar) — Designation, nominal duty point and dimensions.*

IEC Publication 72, *Dimensions and output ratings for rotating electrical machines — Frame numbers 56 to 400 and flange numbers F55 to F1080.*

## 4 BASEPLATE DIMENSIONS

The dimensions and the reference numbers of baseplates are given in figure 1 and table 1.

## 5 BASIC INSTALLATION DIMENSIONS

The baseplate number appropriate to a given pump designation and the corresponding electric motor frame number are obtained from table 2.

The dimensions of the baseplate corresponding to this number are then obtained from table 1 and the basic installation dimensions from the last four columns in table 2.

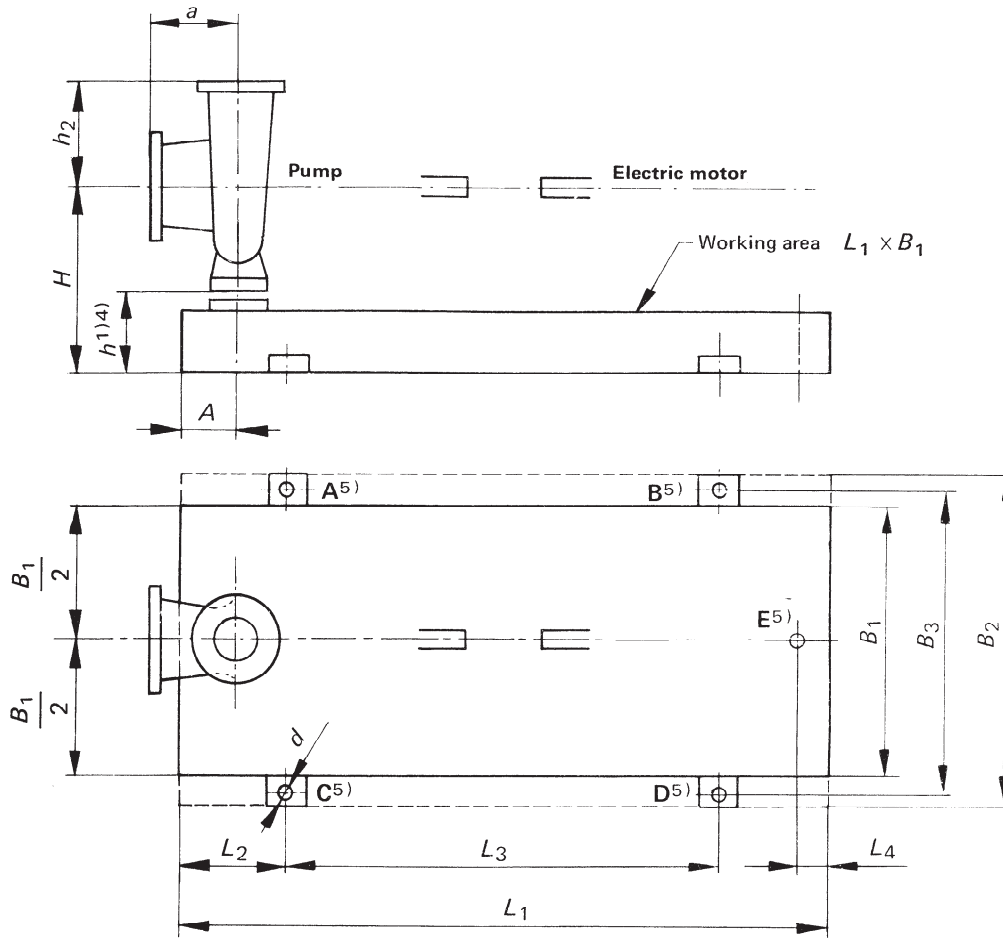


FIGURE 1 – Basic baseplate and installation dimensions

TABLE 1 – Baseplate reference numbers and dimensions

Dimensions in millimetres

Baseplate No.	2	3	4	5	6	7	8	9
$L_1^{(6)}$	800	900	1 000	1 120	1 250	1 400	1 600	1 800
$L_2$	130	150	170	190	205	230	270	300
$L_3$	540	600	660	740	840	940	1 060	1 200
$L_4 \pm 25$	35	35	40	40	45	50	55	55
$B_1$	270	300	340	380	430	480	530	600
$B_2$	360	390	450	490	540	610	660	730
$B_3$	320	350	400	440	490	550	600	670
$h_{max}$	125	125	125	140	160	180	200	200
$d^*$ : clearance hole for bolt	M16	M16	M20	M20	M20	M24	M24	M24

\* To ISO/R 273 (coarse series).