

# SVENSK STANDARD

## SS-EN 15431:2008

Fastställt/Approved: 2008-01-21

Publicerad/Published: 2008-02-21

Utgåva/Edition: 1

Språk/Language: engelska/English

ICS: 43.160

---

### **Utrustning för underhåll av vintervägar och trafikområden – Energisystem och tillhörande manöverorgan – Utbytbart och prestandakrav**

### **Winter and road service area maintenance equipments – Power system and related controls – Interchangeability and performance requirements**

This preview is downloaded from [www.sis.se](http://www.sis.se). Buy the entire standard via <https://www.sis.se/std-64726>

# Hitta rätt produkt och ett leveranssätt som passar dig

## Standarder

Genom att följa gällande standard både effektiviserar och säkrar du ditt arbete. Många standarder ingår dessutom ofta i paket.

## Tjänster

Abonnemang är tjänsten där vi uppdaterar dig med aktuella standarder när förändringar sker på dem du valt att abonnera på. På så sätt är du säker på att du alltid arbetar efter rätt utgåva.

e-nav är vår online-tjänst som ger dig och dina kollegor tillgång till standarder ni valt att abonnera på dygnet runt. Med e-nav kan samma standard användas av flera personer samtidigt.

## Leveranssätt

Du väljer hur du vill ha dina standarder levererade. Vi kan erbjuda dig dem på papper och som pdf.

## Andra produkter

Vi har böcker som underlättar arbetet att följa en standard. Med våra böcker får du ökad förståelse för hur standarder ska följas och vilka fördelar den ger dig i ditt arbete. Vi tar fram många egna publikationer och fungerar även som återförsäljare. Det gör att du hos oss kan hitta över 500 unika titlar. Vi har även tekniska rapporter, specifikationer och "workshop agreement".

Matriser är en översikt på standarder och handböcker som bör läsas tillsammans. De finns på [sis.se](http://sis.se) och ger dig en bra bild över hur olika produkter hör ihop.

## Standardiseringsprojekt

Du kan påverka innehållet i framtida standarder genom att delta i någon av SIS ca 400 Tekniska Kommittéer.

# Find the right product and the type of delivery that suits you

## Standards

By complying with current standards, you can make your work more efficient and ensure reliability. Also, several of the standards are often supplied in packages.

## Services

Subscription is the service that keeps you up to date with current standards when changes occur in the ones you have chosen to subscribe to. This ensures that you are always working with the right edition.

e-nav is our online service that gives you and your colleagues access to the standards you subscribe to 24 hours a day. With e-nav, the same standards can be used by several people at once.

## Type of delivery

You choose how you want your standards delivered. We can supply them both on paper and as PDF files.

## Other products

We have books that facilitate standards compliance. They make it easier to understand how compliance works and how this benefits you in your operation. We produce many publications of our own, and also act as retailers. This means that we have more than 500 unique titles for you to choose from. We also have technical reports, specifications and workshop agreements.

Matrices, listed at [sis.se](http://sis.se), provide an overview of which publications belong together.

## Standardisation project

You can influence the content of future standards by taking part in one or other of SIS's 400 or so Technical Committees.

Europastandarden EN 15431:2008 gäller som svensk standard. Detta dokument innehåller den officiella engelska versionen av EN 15431:2008.

The European Standard EN 15431:2008 has the status of a Swedish Standard. This document contains the official English version of EN 15431:2008.

© Copyright/Upphovsrätten till denna produkt tillhör SIS, Swedish Standards Institute, Stockholm, Sverige. Användningen av denna produkt regleras av slutanvändarlicensen som återfinns i denna produkt, se standardens sista sidor.

© Copyright SIS, Swedish Standards Institute, Stockholm, Sweden. All rights reserved. The use of this product is governed by the end-user licence for this product. You will find the licence in the end of this document.

Upplysningar om sakinnehållet i standarden lämnas av SIS, Swedish Standards Institute, telefon 08-555 520 00.

Standarder kan beställas hos SIS Förlag AB som även lämnar allmänna upplysningar om svensk och utländsk standard.

Information about the content of the standard is available from the Swedish Standards Institute (SIS), tel +46 8 555 520 00.

Standards may be ordered from SIS Förlag AB, who can also provide general information about Swedish and foreign standards.

SIS Förlag AB, SE 118 80 Stockholm, Sweden. Tel: +46 8 555 523 10. Fax: +46 8 555 523 11.

E-mail: [sis.sales@sis.se](mailto:sis.sales@sis.se) Internet: [www.sis.se](http://www.sis.se)



EUROPEAN STANDARD

**EN 15431**

NORME EUROPÉENNE

EUROPÄISCHE NORM

January 2008

---

ICS 43.160

English Version

**Winter and road service area maintenance equipments - Power system and related controls - Interchangeability and performance requirements**

Matériels de viabilité hivernale et d'entretien des dépendances routières - Organes de puissance et commandes associées - Interchangeabilité et exigences de performance

Winterdienst- und Straßenbetriebsdienstausstattung - Antrieb und Steuerung von Anbaumaschinen - Anforderungen an Austauschbarkeit und Leistung

This European Standard was approved by CEN on 21 October 2007.

CEN members are bound to comply with the CEN/CENELEC Internal Regulations which stipulate the conditions for giving this European Standard the status of a national standard without any alteration. Up-to-date lists and bibliographical references concerning such national standards may be obtained on application to the CEN Management Centre or to any CEN member.

This European Standard exists in three official versions (English, French, German). A version in any other language made by translation under the responsibility of a CEN member into its own language and notified to the CEN Management Centre has the same status as the official versions.

CEN members are the national standards bodies of Austria, Belgium, Bulgaria, Cyprus, Czech Republic, Denmark, Estonia, Finland, France, Germany, Greece, Hungary, Iceland, Ireland, Italy, Latvia, Lithuania, Luxembourg, Malta, Netherlands, Norway, Poland, Portugal, Romania, Slovakia, Slovenia, Spain, Sweden, Switzerland and United Kingdom.



EUROPEAN COMMITTEE FOR STANDARDIZATION  
COMITÉ EUROPÉEN DE NORMALISATION  
EUROPÄISCHES KOMITEE FÜR NORMUNG

**Management Centre: rue de Stassart, 36 B-1050 Brussels**

---

## Contents

	page
<b>Foreword</b> .....	<b>3</b>
<b>1 Scope</b> .....	<b>4</b>
<b>2 Normative references</b> .....	<b>4</b>
<b>3 Power System and related controls</b> .....	<b>5</b>
3.1 Hydraulic system for municipal vehicles - Specifications .....	5
3.1.1 Drive of the oil pump.....	5
3.1.2 Hydraulic Circuits.....	5
3.1.3 Connection between the hydraulic system of the vehicle and the implements.....	5
3.1.4 Flow Rates.....	5
3.1.5 Pressure .....	5
3.1.6 Power.....	6
3.1.7 Capacity of the oil tank .....	6
3.1.8 Maximum oil temperature, cooling capacity test procedure .....	6
3.1.9 Line cross sections.....	8
3.1.10 Couplings and functions .....	9
3.1.11 Hydraulic Fluid.....	10
3.2 Mechanical Front-Mounted Power Take Off PTO, shaft profile and Performance.....	10
3.2.1 General .....	10
3.2.2 Profile A: $n = 540 \text{ min}^{-1}$ $P_{\text{max}} = 60 \text{ kW}$ .....	10
3.2.3 Profile B: $n = 540 \text{ min}^{-1}$ or $n = 1\,000 \text{ min}^{-1}$ $P_{\text{max}} = 150 \text{ kW}$ .....	10
3.2.4 Power take-off shaft profile.....	11
3.3 Electrical Connectors.....	13
3.3.1 Connector 24 V, 7 pins, at the front of the vehicle, socket design according to ISO 1185 .....	13
3.3.2 Connector 12 V, 7 pins, at the front of the vehicle, socket design based on ISO 1724.....	14
3.3.3 Electrical Connectors in the cabine, 24 V, 3 pin .....	15
3.3.4 Electrical Connectors in the cabin, 12 V, 3 pin.....	16
<b>Bibliography</b> .....	<b>18</b>

## **Foreword**

This document (EN 15431: 2008) has been prepared by CEN/TC 337/WG 3 "Interface between tools and vehicle", the secretariat of which is held by UNI-CUNA, under the direction of Technical Committee CEN/TC 337 "Winter maintenance and road service area maintenance equipment", the secretariat of which is held by AFNOR.

This European Standard shall be given the status of a national standard, either by publication of an identical text or by endorsement, at the latest by July 2008, and conflicting national standards shall be withdrawn at the latest by July 2008.

According to the CEN/CENELEC Internal Regulations, the national standards organizations of the following countries are bound to implement this European Standard : Austria, Belgium, Bulgaria, Cyprus, Czech Republic, Denmark, Estonia, Finland, France, Germany, Greece, Hungary, Iceland, Ireland, Italy, Latvia, Lithuania, Luxembourg, Malta, Netherlands, Norway, Poland, Portugal, Romania, Slovakia, Slovenia, Spain, Sweden, Switzerland and United Kingdom.

## **1 Scope**

This document applies to power systems equipped for the operation and able to drive implements and attachments such as snow ploughs and/or spreaders on winter service vehicles or mowers on road service area maintenance vehicles, equipped with front-mounting plates according to EN 15432.

The purpose of this standard is to ensure interchangeability of vehicles and implements. The minimum requirements on the performance and the components of the hydraulic system as well as the kind, the size and the location of the connecting elements between the vehicle and the implement are specified in this standard.

This standard does not deal with airport equipment.

This standard does not cover applications, where the implements need a continuous hydraulic oil flow exceeding 45 l/min.

## **2 Normative references**

The following referenced documents are indispensable for the application of this document. For dated references, only the edition cited applies. For undated references the latest edition of the referenced document (including any amendments) applies.

ISO 1185, *Road vehicles – Connectors for the electrical connection of towing and towed vehicles – 7-pole connector type 24 N (normal) for vehicles with 24 V nominal supply voltage*

ISO 1724, *Road vehicles – Connectors for the electrical connection of towing and towed vehicles – 7-pole connector type 12 N (normal) for vehicles with 12 V nominal supply voltage*

ISO 16028, *Hydraulic fluid power – Flush-face type, quick-action couplings for use at pressures of 20 MPa (200 bar) to 31,5 MPa (315 bar) – Specifications*

ISO 16844-2, *Road vehicles – Tachograph systems – Part 2: Recording unit, electrical interface*



### 3 Power System and related controls

#### 3.1 Hydraulic system for municipal vehicles - Specifications

##### 3.1.1 Drive of the oil pump

The oil pump shall be driven directly by the vehicle engine and independently from the vehicle drive train. A clutch or a coupling between the engine and the pump is permissible. A drive ratio between the engine and the pump is allowed.

##### 3.1.2 Hydraulic Circuits

The hydraulic circuits must be open type circuits.

The hydraulic system consists in either one variable displacement pump or one or two constant pumps.

If there are two circuits, they shall provide flowrate and pressure independent at any working condition.

For each circuit there shall exist:

- one primary excess pressure protection device and
- one switching device for unpressurized circulation. Each circuit or both circuits together shall be equipped with an oil reservoir and a filter for protection of the hydraulic system.

##### 3.1.3 Connection between the hydraulic system of the vehicle and the implements

Hydraulic connectors shall be ensured by the use of quick couplings, refer to 3.1.10.

##### 3.1.4 Flow Rates

Nominal Flow Rate circuit No. 1: min. 20 l/min +/- 5 l/min at 75 % of the nominal engine speed (e.g. snow plough);

Nominal Flow Rate circuit No. 2: min. 40 l/min +/- 5 l/min at 75 % of the nominal engine speed (e.g. spreader).

##### 3.1.5 Pressure

Pressure circuit No.1: min. 175 bar

Pressure circuit No.2: min. 200 bar at trucks with GVW ≤ 18 t

min. 250 bar at trucks with GVW > 18 t

### 3.1.6 Power

Minimum continuous power for both circuits:  $P_{\min} = 16 \text{ kW}$  at trucks with GVW  $\leq 18 \text{ t}$

$P_{\min} = 20 \text{ kW}$  at trucks with GVW  $> 18 \text{ t}$

### 3.1.7 Capacity of the oil tank

The capacity of the oil tank shall be such that a removal by the implements up to 10 l shall not affect the ability of the hydraulic system to work properly.

### 3.1.8 Maximum oil temperature, cooling capacity test procedure

The cooling capacity of the hydraulic system for winter maintenance vehicles shall be at least 5 % of the minimum continuous power (see section 3.1.6). For road service area maintenance vehicles including summer operation the cooling capacity shall be at least 25 % of the minimum continuous power. If required, an oil cooler can be installed.

The cooling capacity shall be verified with a test, which is described in the following.

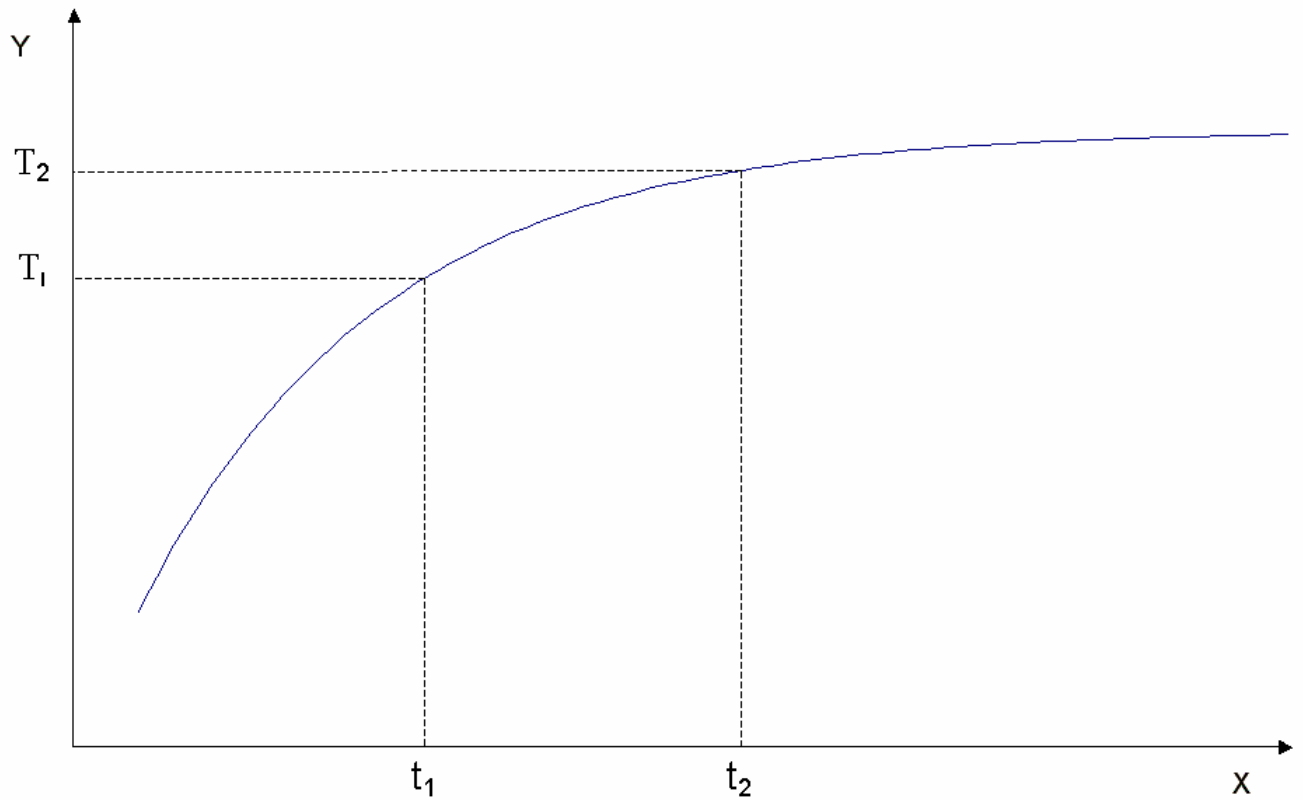
While executing the hydraulic system test in the hydraulic circuit 2, the difference between the hydraulic oil temperature in the oil tank and the ambient air temperature must not exceed  $\Delta T = 50 \text{ K}$ , i.e. with an ambient air temperature of  $30 \text{ }^{\circ}\text{C}$ , the hydraulic oil temperature in the oil tank must not exceed  $80 \text{ }^{\circ}\text{C}$ .

An adjustable restrictor for simulating the power loss shall be connected to the couplings of circuit 2. The restrictor should be adjusted to a value  $\Delta p$ , that gives a power absorption equivalent to 5 alternatively 25 % of the minimum continuous power at 75 % of the rated engine speed. During the test, a temperature difference between the hydraulic oil temperature in the oil tank and the ambient air temperature of  $\Delta T = 50 \text{ K}$  must not be exceeded.

The oil temperature has to be measured at the outlet of the oil tank.

For testing the system, the fans of the hydraulic oil cooler – if installed - need to be engaged.

Test condition: ambient air temperature  $25 \text{ }^{\circ}\text{C} \pm 10 \text{ }^{\circ}\text{C}$ .



**Key**

X t [s]  
Y T [°C]

**Figure1 – Temperature rise over time**

**Table 1 – Minimum cooling capacity**

	Cooling capacity [% of the minimum continuous power]	Max. ΔT [K]
Winter maintenance vehicle	5	50
Road service area maintenance vehicle (winter and summer use)	25	50

The test can be terminated, when the temperature gradient  $(T_2 - T_1) / (t_2 - t_1)$  is less than 5 K / 20 min.

$$P = Q \times \Delta p \tag{1}$$

where

- P is the power according to the minimum continuous power (see section 3.1.6);
- Q is the volume flow of circuit 2 at 75% of the rated engine speed (max. volume flow when variable displacement pumps are being used);
- Δp is the adjusted pressure at the flow restrictor;