

# SVENSK STANDARD

## SS-ISO 4252:2007

Fastställt/Approved: 2007-12-19  
Publicerad/Published: 2008-02-04  
Utgåva/Edition: 2  
Språk/Language: engelska/English  
ICS: 65.060.10

---

**Lantbrukstraktorer – In- och utgångar samt förarens arbetsplats –  
Mått (ISO 4252:2007, IDT)**

**Agricultural tractors – Operator's workplace, access and exit –  
Dimensions (ISO 4252:2007, IDT)**



SWEDISH  
STANDARDS  
INSTITUTE

# Hitta rätt produkt och ett leveranssätt som passar dig

## Standarder

Genom att följa gällande standard både effektiviserar och säkrar du ditt arbete. Många standarder ingår dessutom ofta i paket.

## Tjänster

Abonnemang är tjänsten där vi uppdaterar dig med aktuella standarder när förändringar sker på dem du valt att abonnera på. På så sätt är du säker på att du alltid arbetar efter rätt utgåva.

e-nav är vår online-tjänst som ger dig och dina kollegor tillgång till standarder ni valt att abonnera på dygnet runt. Med e-nav kan samma standard användas av flera personer samtidigt.

## Leveranssätt

Du väljer hur du vill ha dina standarder levererade. Vi kan erbjuda dig dem på papper och som pdf.

## Andra produkter

Vi har böcker som underlättar arbetet att följa en standard. Med våra böcker får du ökad förståelse för hur standarder ska följas och vilka fördelar den ger dig i ditt arbete. Vi tar fram många egna publikationer och fungerar även som återförsäljare. Det gör att du hos oss kan hitta över 500 unika titlar. Vi har även tekniska rapporter, specifikationer och "workshop agreement".

Matriser är en översikt på standarder och handböcker som bör läsas tillsammans. De finns på sis.se och ger dig en bra bild över hur olika produkter hör ihop.

## Standardiseringsprojekt

Du kan påverka innehållet i framtida standarder genom att delta i någon av SIS ca 400 Tekniska Kommittéer.

# Find the right product and the type of delivery that suits you

## Standards

By complying with current standards, you can make your work more efficient and ensure reliability. Also, several of the standards are often supplied in packages.

## Services

Subscription is the service that keeps you up to date with current standards when changes occur in the ones you have chosen to subscribe to. This ensures that you are always working with the right edition.

e-nav is our online service that gives you and your colleagues access to the standards you subscribe to 24 hours a day. With e-nav, the same standards can be used by several people at once.

## Type of delivery

You choose how you want your standards delivered. We can supply them both on paper and as PDF files.

## Other products

We have books that facilitate standards compliance. They make it easier to understand how compliance works and how this benefits you in your operation. We produce many publications of our own, and also act as retailers. This means that we have more than 500 unique titles for you to choose from. We also have technical reports, specifications and workshop agreements.

Matrices, listed at sis.se, provide an overview of which publications belong together.

## Standardisation project

You can influence the content of future standards by taking part in one or other of SIS's 400 or so Technical Committees.

Den internationella standarden ISO 4252:2007 gäller som svensk standard. Detta dokument innehåller den officiella engelska versionen av ISO 4252:2007.

Denna standard ersätter SS-ISO 4252, utgåva 1.

The International Standard ISO 4252:2007 has the status of a Swedish Standard. This document contains the official English version of ISO 4252:2007.

This standard supersedes the Swedish Standard SS-ISO 4252, edition 1.

© Copyright/Upphovsrätten till denna produkt tillhör SIS, Swedish Standards Institute, Stockholm, Sverige. Användningen av denna produkt regleras av slutanvändarlicensen som återfinns i denna produkt, se standardens sista sidor.

© Copyright SIS, Swedish Standards Institute, Stockholm, Sweden. All rights reserved. The use of this product is governed by the end-user licence for this product. You will find the licence in the end of this document.

Upplysningar om sakinnehållet i standarden lämnas av SIS, Swedish Standards Institute, telefon 08-555 520 00.

Standarder kan beställas hos SIS Förlag AB som även lämnar allmänna upplysningar om svensk och utländsk standard.

Information about the content of the standard is available from the Swedish Standards Institute (SIS), tel +46 8 555 520 00.

Standards may be ordered from SIS Förlag AB, who can also provide general information about Swedish and foreign standards.

SIS Förlag AB, SE 118 80 Stockholm, Sweden. Tel: +46 8 555 523 10. Fax: +46 8 555 523 11.

E-mail: [sis.sales@sis.se](mailto:sis.sales@sis.se) Internet: [www.sis.se](http://www.sis.se)

## Foreword

ISO (the International Organization for Standardization) is a worldwide federation of national standards bodies (ISO member bodies). The work of preparing International Standards is normally carried out through ISO technical committees. Each member body interested in a subject for which a technical committee has been established has the right to be represented on that committee. International organizations, governmental and non-governmental, in liaison with ISO, also take part in the work. ISO collaborates closely with the International Electrotechnical Commission (IEC) on all matters of electrotechnical standardization.

International Standards are drafted in accordance with the rules given in the ISO/IEC Directives, Part 2.

The main task of technical committees is to prepare International Standards. Draft International Standards adopted by the technical committees are circulated to the member bodies for voting. Publication as an International Standard requires approval by at least 75 % of the member bodies casting a vote.

Attention is drawn to the possibility that some of the elements of this document may be the subject of patent rights. ISO shall not be held responsible for identifying any or all such patent rights.

ISO 4252 was prepared by Technical Committee ISO/TC 23, *Tractors and machinery for agriculture and forestry*, Subcommittee SC 4, *Tractors*.

This third edition cancels and replaces the second edition (ISO 4252:1992), which has been technically revised.

# Agricultural tractors — Operator's workplace, access and exit — Dimensions

## 1 Scope

This International Standard specifies the design dimensions of agricultural tractors having a minimum track width exceeding 1 150 mm in respect of

- a) the minimum dimensions of their access doorways,
- b) the number, location and minimum dimensions of their emergency exits, and
- c) their minimum internal clearance dimensions.

## 2 Normative references

The following referenced documents are indispensable for the application of this document. For dated references, only the edition cited applies. For undated references, the latest edition of the referenced document (including any amendments) applies.

ISO 789-6, *Agricultural tractors — Test procedures — Part 6: Centre of gravity*

ISO 5353, *Earth-moving machinery, and tractors and machinery for agriculture and forestry — Seat index point*

## 3 Terms and definitions

For the purposes of this document, the following terms and definitions apply.

### 3.1

#### **emergency exit**

means of exit that can be opened from the inside of the cabin

NOTE It can be a normal access door.

### 3.2

#### **access door**

#### **doorway**

means of entry to, and exit from, the workplace or cabin

### 3.3

#### **mountain tractor**

four-wheel drive agricultural or forestry tractor whose interchangeable equipment is intended for agricultural or forestry use and which is characterized by a supporting frame, one or more power take-offs, a technically permissible mass not greater than 10 t at a ratio to the maximum unladen mass in running order of less than 2,5, and which has a centre of gravity less than 850 mm, determined in accordance with ISO 789-6 and measured in relation to the ground using the tyres that are normally fitted

#### 4 Access doorway(s)

The minimum dimensions of the access doorway aperture, both for the frame and with the door open, shall be as shown in Figures 1 and 2. For tractors where the seat can be reached straight from the footstep, the heights at which the widths are measured are may be decreased.

Dimensions in millimetres

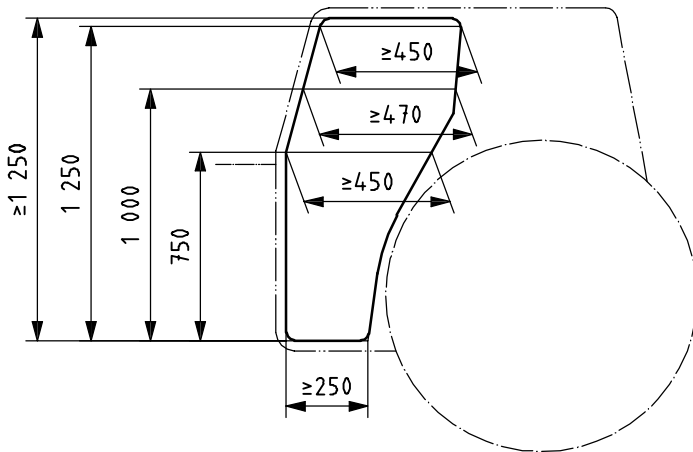
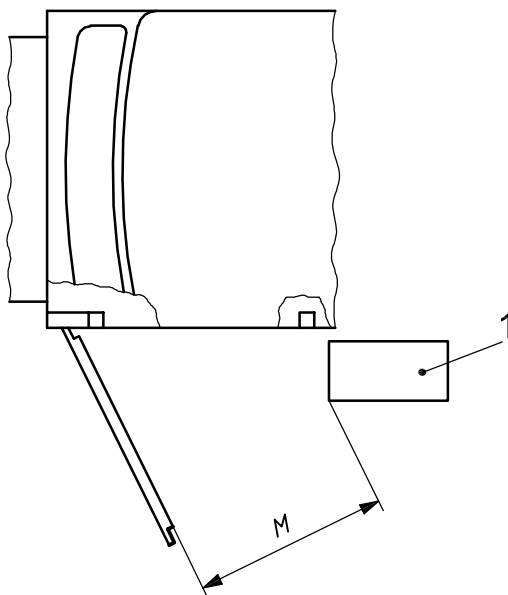


Figure 1 — Access doorway dimensions



**Key**

- 1 wheel or other tractor part
- M* Minimum dimension according to Figure 1.

Figure 2 — Example of limitation of dimensions with door open

## 5 Emergency exits

### 5.1 Number and location

There shall be a minimum of two emergency exits, each of which shall be on a different side of the cabin: the front, rear and roof of the cabin may be considered as sides for this purpose.

NOTE In order to meet market needs and/or national regulations, two emergency exits can be necessary in addition to an access door.

Any window of sufficient size may be designated as an emergency exit if it is made of breakable glass that can be broken with a tool provided in the cab for that purpose. Laminated glass, plastic or double glass are not considered breakable for the purposes of this International Standard.

### 5.2 Dimensions

The cross-sectional dimensions of each emergency exit shall be large enough to enclose an ellipse with principal axes of 640 mm and 440 mm.

## 6 Internal clearance dimensions

The minimum clearance dimensions inside the cab shall be as shown in Figure 3 and in accordance with Table 1. The clearance dimensions for the hand controls (see Figure 3) shall be in accordance with Table 2.

These dimensions are defined in relation to the vertical reference plane, which is generally longitudinal to the tractor and passes through the seat index point (SIP) and the steering-wheel centre. The SIP shall be determined in accordance with ISO 5353.

These dimensions are valid for tractors with only one operator position.

For verification purposes, the seat shall be set in the rearmost longitudinal position and at the mid-point of the height adjustment range. Seats having a suspension system — whether or not adjustable according to the driver's weight — shall be set to the mid-point of the suspension travel.

Dimensions in millimetres

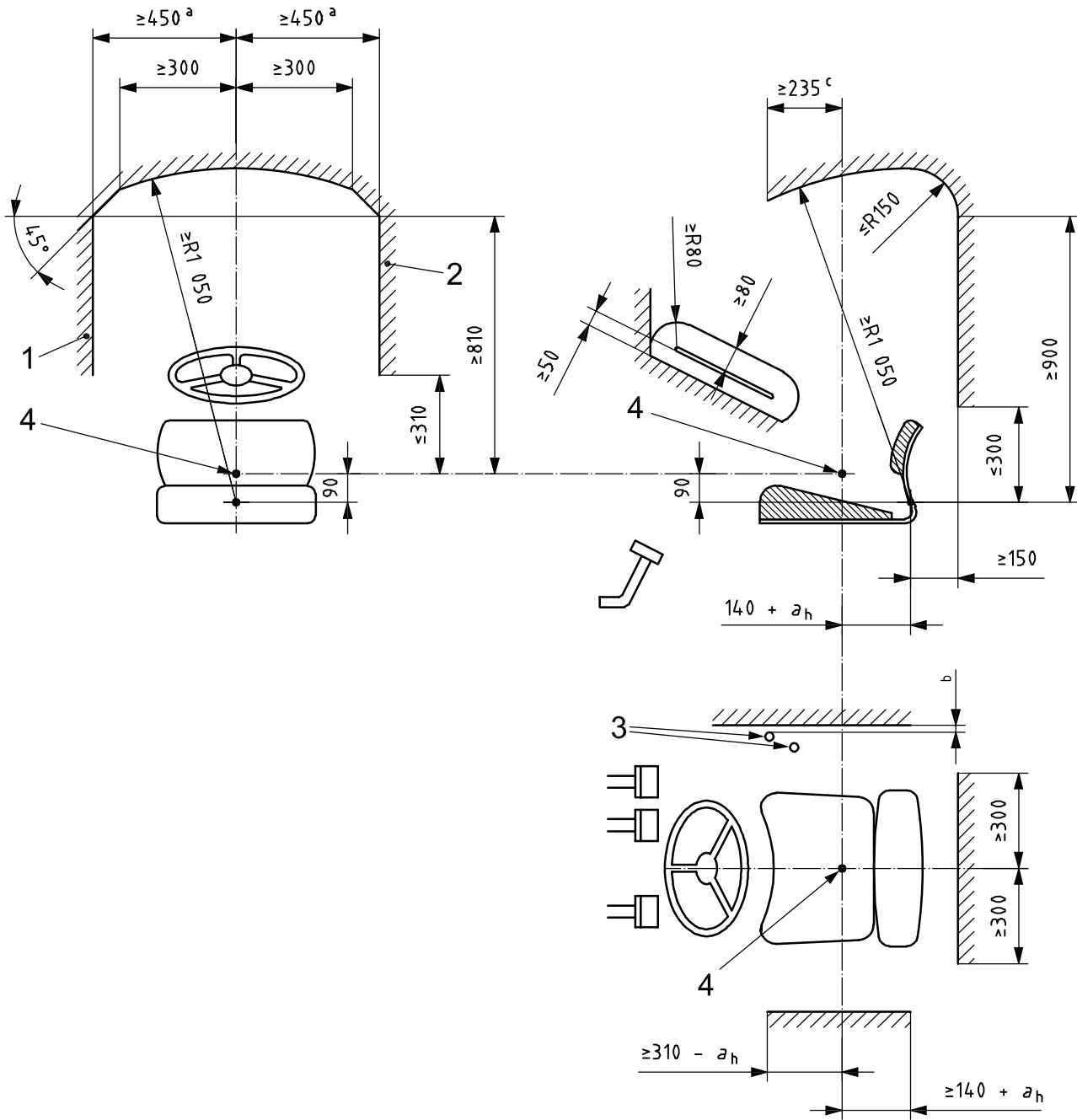


Figure 3 — Minimum internal clearance dimensions