



SWEDISH
STANDARDS
INSTITUTE

SVENSK STANDARD SS-EN 13451-6

Fastställt	Utgåva	Sida
2001-07-27	1	1 (1+6)

© Copyright SIS. Reproduction in any form without permission is prohibited.

Swimming pool equipment – Part 6: Additional specific safety requirements and test methods for turning boards

The European Standard EN 13451-6:2001 has the status of a Swedish Standard. This document contains the official English version of EN 13451-6:2001.

Swedish Standards corresponding to documents referred to in this Standard are listed in "Catalogue of Swedish Standards", issued by SIS. The Catalogue lists, with reference number and year of Swedish approval, International and European Standards approved as Swedish Standards as well as other Swedish Standards.

Utrustning för simbassänger – Del 6: Kompletterande säkerhets- krav och provningsmetoder för vändplattor

Europastandarden EN 13451-6:2001 gäller som svensk standard. Detta dokument innehåller den officiella engelska versionen av EN 13451-6:2001.

Motsvarigheten och aktualiteten i svensk standard till de publikationer som omnämns i denna standard framgår av "Katalog över svensk standard", som ges ut av SIS. I katalogen redovisas internationella och europeiska standarder som fastställts som svenska standarder och övriga gällande svenska standarder.

ICS 97.220.10

Standarder kan beställas hos SIS Förlag AB som även lämnar allmänna upplysningar om svensk och utländsk standard.
Postadress: SIS Förlag AB, 118 80 STOCKHOLM
Telefon: 08 - 555 523 00. Telefax: 08 - 555 523 11
E-post: sis.sales@sis.se. Internet: www.sisforlag.se

Upplysningar om **sakinnehållet** i standarden lämnas av SIS.
Telefon: 08 - 555 520 00. Telefax: 08 - 555 520 01

Tryckt i september 2001

EUROPEAN STANDARD
NORME EUROPÉENNE
EUROPÄISCHE NORM

EN 13451-6

February 2001

ICS 97.220.10

English version

Swimming pool equipment - Part 6: Additional specific safety requirements and test methods for turning boards

Équipement de piscine - Partie 6: Exigences de sécurité et méthodes d'essai complémentaires spécifiques aux plaques de touche

Schwimmbadgeräte - Teil 6: Zusätzliche besondere sicherheitstechnische Anforderungen und Prüfverfahren für Anschlagplatten

This European Standard was approved by CEN on 13 January 2001.

CEN members are bound to comply with the CEN/CENELEC Internal Regulations which stipulate the conditions for giving this European Standard the status of a national standard without any alteration. Up-to-date lists and bibliographical references concerning such national standards may be obtained on application to the Management Centre or to any CEN member.

This European Standard exists in three official versions (English, French, German). A version in any other language made by translation under the responsibility of a CEN member into its own language and notified to the Management Centre has the same status as the official versions.

CEN members are the national standards bodies of Austria, Belgium, Czech Republic, Denmark, Finland, France, Germany, Greece, Iceland, Ireland, Italy, Luxembourg, Netherlands, Norway, Portugal, Spain, Sweden, Switzerland and United Kingdom.



EUROPEAN COMMITTEE FOR STANDARDIZATION
COMITÉ EUROPÉEN DE NORMALISATION
EUROPÄISCHES KOMITEE FÜR NORMUNG

Management Centre: rue de Stassart, 36 B-1050 Brussels

Contents

	Page		Page
Foreword	2	4.2 Structural integrity	4
1 Scope	3	4.3 Permeability for water circulation	4
2 Normative references	3	4.4 Top and side edges	4
3 Terms and definitions	3	4.5 Openings for lane lines	5
4 Safety requirements	3	5 Test methods	5
4.1 Dimensions	3	Annex A (informative) Requirements of FINA . .	6

Foreword

This European Standard has been prepared by Technical Committee CEN/TC 136 "Sports, playground and other recreational equipment", the secretariat of which is held by DIN.

This European Standard shall be given the status of a national standard, either by publication of an identical text or by endorsement, at the latest by August 2001, and conflicting national standards shall be withdrawn at the latest by August 2001.

The European Standard EN 13451 "Swimming pool equipment" consists of

- Part 1: General safety requirements and test methods
- Part 2: Additional specific safety requirements and test methods for ladders, stepladders and handle bends
- Part 3: Additional specific safety requirements and test methods for equipment for water treatment purposes
- Part 4: Additional specific safety requirements and test methods for starting platforms
- Part 5: Additional specific safety requirements and test methods for lane lines
- Part 6: Additional specific safety requirements and test methods for turning boards
- Part 7: Additional specific safety requirements and test methods for water polo goals
- Part 8: Additional specific safety requirements and test methods for leisure water features
- Part 9: Safety signs
- Part 10: Additional specific safety requirements and test methods for diving platforms, diving springboards and associated equipment
- Part 11: Additional specific safety requirements and test methods for moveable pool floors and moveable bulkheads

Annex A is informative.

According to the CEN/CENELEC Internal Regulations, the national standards organizations of the following countries are bound to implement this European Standard: Austria, Belgium, Czech Republic, Denmark, Finland, France, Germany, Greece, Iceland, Ireland, Italy, Luxembourg, Netherlands, Norway, Portugal, Spain, Sweden, Switzerland and the United Kingdom.

1 Scope

This part of EN 13451 specifies safety requirements for turning boards in addition to the general safety requirements of EN 13451-1:2001.

The requirements of this specific standard take priority over those in EN 13451-1:2001.

This part of EN 13451:2001 is applicable to manufactured turning boards for use in competition and training.

2 Normative references

This European Standard incorporates, by dated or undated reference, provisions from other publications. These normative references are cited at the appropriate places in the text and the publications are listed hereafter. For dated references, subsequent amendments to or revisions of any of these publications apply to this European Standard only when incorporated in it by amendment or revision. For undated references, the latest edition of the publication referred to applies (including amendments).

EN 13451-1:2001

Swimming pool equipment – Part 1: General safety requirements and test methods

3 Terms and definitions

For the purposes of this standard the terms and definitions of EN 13451-1:2001 and the following apply:

3.1 turning board: Device, fixed or removable, fitted to the pool surround to extend the height of the end wall, in the same plane. For swimmers, it provides a clear delineation of the end of the wall and/or surface to touch. They can be used for mounting timing panels.

4 Safety requirements

4.1 Dimensions

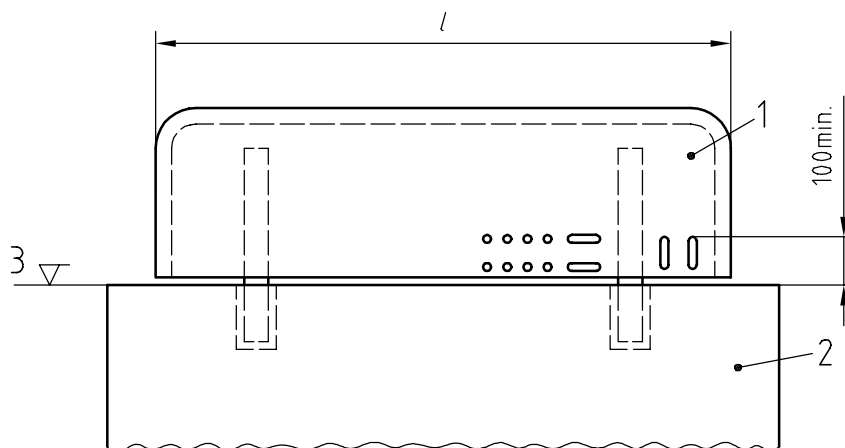
The dimensions indicated in the figures 1 and 2 shall be complied with. The design of the equipment doesn't need to comply with the examples given.

The turning board shall extend over the whole width of the lane, in one or more sections.

Turning boards shall be fitted in the same plane as the pool wall (see figure 2).

The minimum height of the turning boards shall be 300 mm measured from water level.

Dimensions in millimeters



Key

- edges designed to be suitable for grasping
- 1 Turning board with examples of openings for permeability
- 2 Pool wall
- 3 Water level
- l Lane width

Figure 1: Front view of a turning board – Example of installation over a Zurich overflow channel

NOTE: Dimensional requirements for competitive use, stipulated by the governing body FINA (Fédération Internationale de Natation Amateur), are given in annex A for information.

4.2 Structural integrity

Turning boards shall be designed to withstand a horizontal load, equivalent to 100 % of the vertical load stated in annex A of EN 13451-1 : 2001, applied at 90° to the panels, in either direction and parallel to the water surface.

4.3 Permeability for water circulation

Turning boards shall be designed to allow the passage of water for water treatment purposes, for a height ≥ 100 mm in their lower part (see figure 2).

4.4 Top and side edges

The top and the side edges of the turning boards shall be designed to be suitable for grasping with a thickness between 25 mm and 50 mm (see figure 1).