



Handläggande organ

SVENSK MATERIAL- & MEKANSTANDARD, SMS

Fastställt

2000-05-26

Utgåva

1

Sida

1 (1+8)

© Copyright SIS. Reproduction in any form without permission is prohibited.

Woodworking machines – Veneer pack edge shears – Nomenclature and acceptance conditions

The International Standard ISO 7949:1985 has the status of a Swedish Standard. This document contains the official English version of ISO 7949:1985.

Swedish Standards corresponding to documents referred to in this Standard are listed in "Catalogue of Swedish Standards", issued by SIS. The Catalogue lists, with reference number and year of Swedish approval, International and European Standards approved as Swedish Standards as well as other Swedish Standards.

Träbearbetningsmaskiner – Fanérklippmaskiner – Terminologi och acceptanskontroll

Den internationella standarden ISO 7949:1985 gäller som svensk standard. Detta dokument innehåller den officiella engelska versionen av ISO 7949:1985.

Motsvarigheten och aktualiteten i svensk standard till de publikationer som omnämns i denna standard framgår av "Katalog över svensk standard", som ges ut av SIS. I katalogen redovisas internationella och europeiska standarder som fastställts som svenska standarder och övriga gällande svenska standarder.

ICS 79.120.10

Standarder kan beställas hos SIS Förlag AB som även lämnar allmänna upplysningar om svensk och utländsk standard.
Postadress: SIS, Box 6455, 113 82 STOCKHOLM
Telefon: 08 - 610 30 00. Telefax: 08 - 30 77 57
E-post: sis.sales@sis.se. Internet: www.sisforlag.se

Upplysningar om **sakinnehållet** i standarden lämnas av SMS.
Telefon: 08 - 459 56 00. Telefax: 08 - 667 85 42
E-post: info@sms-standard.se

Prisgrupp L

Tryckt i juli 2000

Foreword

ISO (the International Organization for Standardization) is a worldwide federation of national standards bodies (ISO member bodies). The work of preparing International Standards is normally carried out through ISO technical committees. Each member body interested in a subject for which a technical committee has been established has the right to be represented on that committee. International organizations, governmental and non-governmental, in liaison with ISO, also take part in the work.

Draft International Standards adopted by the technical committees are circulated to the member bodies for approval before their acceptance as International Standards by the ISO Council. They are approved in accordance with ISO procedures requiring at least 75 % approval by the member bodies voting.

International Standard ISO 7949 was prepared by Technical Committee ISO/TC 39, *Machine tools*.

Woodworking machines — Veneer pack edge shears — Nomenclature and acceptance conditions

1 Scope and field of application

This International Standard specifies the nomenclature appropriate to each part of the machine and, with reference to ISO/R 230, both geometrical and practical tests for veneer pack edge shears, and gives the corresponding permissible deviations which apply to machines for general purpose use and normal accuracy.

NOTE — In addition to terms used in two of the three official ISO languages (English and French), this International Standard gives in the annex the equivalent terms in German, Spanish, Italian and Swedish; these have been included at the request of Technical Committee ISO/TC 39 and are published under the responsibility of the member bodies for Germany, F.R. (DIN), Spain (IRANOR), Italy (UNI) and Sweden (SIS). However, only the terms and definitions given in the official languages can be considered as ISO terms and definitions.

This International Standard deals only with the verification of accuracy of the machine. It does not apply to the testing of the running of the machine (vibrations, abnormal noises, stick-slip motion of the components, etc.), nor to its characteristics (speeds, feeds, etc.) which should generally be checked before testing accuracy.

2 Reference

ISO/R 230, *Test code for machine tools*.

3 Preliminary remarks

3.1 In this International Standard all dimensions and permissible deviations are expressed in millimetres.

3.2 To apply this International Standard, reference should be made to ISO/R 230, especially for installation of the machine before testing, the warming up of the main spindle and other moving parts, and description of measuring methods. The measuring instruments shall not permit errors over 1/3 of the checked tolerances.

3.3 The sequence in which the geometrical tests are given is related to the sub-assemblies of the machine and this in no way defines the practical order of testing. In order to make mounting of instruments or gauging easier, tests may be applied in any order.

3.4 When inspecting a machine, it is not always possible or necessary to carry out all the tests given in this International Standard.

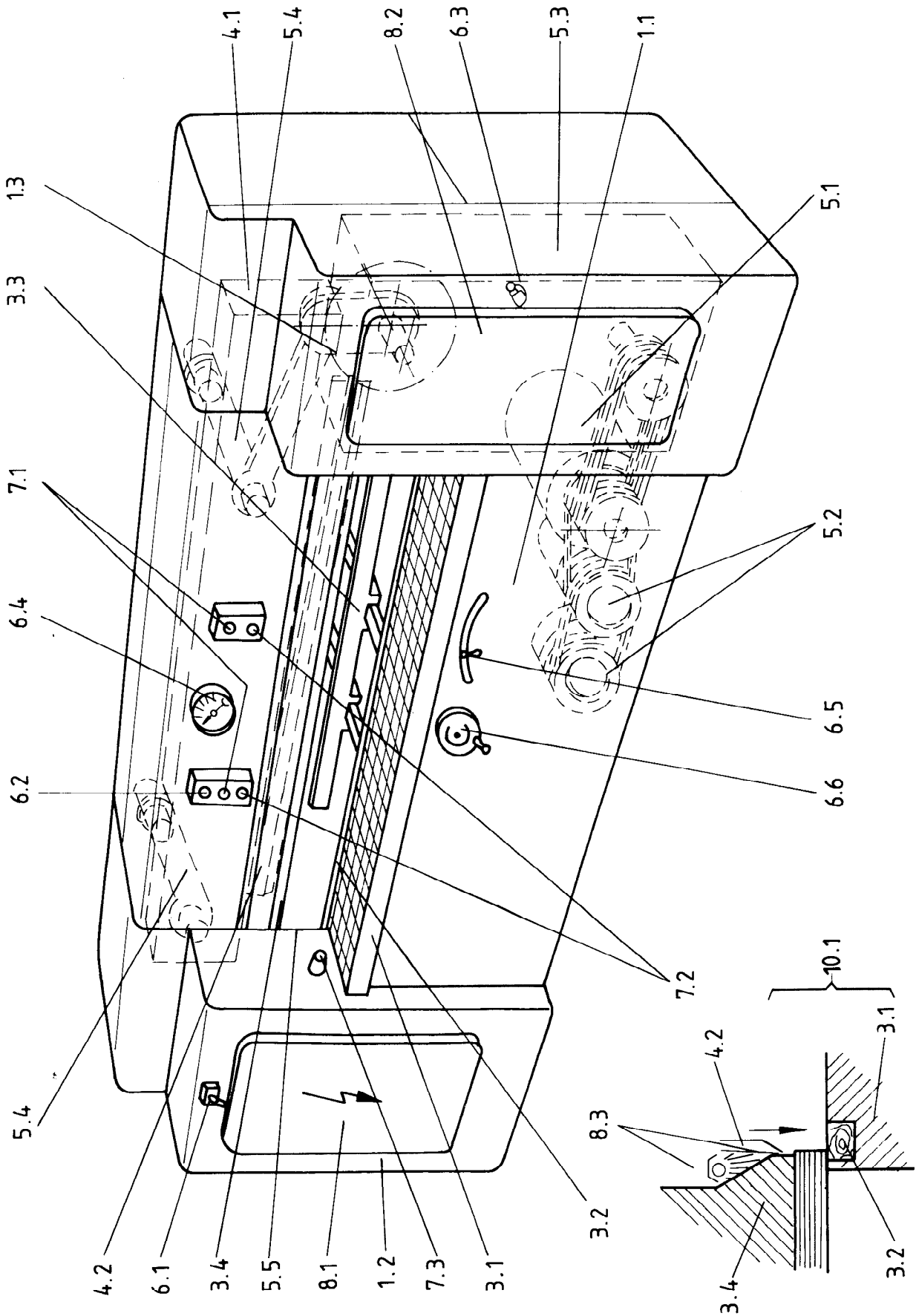
3.5 It is up to the user to choose, in agreement with the manufacturer, those tests relating to the properties which are of interest to him, but these tests are to be clearly stated when ordering a machine.

3.6 A movement is longitudinal when it takes place in the working direction of the piece.

3.7 When establishing the tolerance for a measuring range different from that given in this International Standard (see 2.311 in ISO/R 230), it should be taken into consideration that the minimum value of the tolerance is 0,01 mm.

ISO 7949-1985 (E)

4 Nomenclature



Reference	English	French
	Veneer pack edge shears	Massicot pour paquets de placage
1	Framework	Ossature
1.1	Central body	Bâti central
1.2	Left hand column	Montant gauche
1.3	Right hand column	Montant droit
2	Feed of workpiece and/or tools	Déplacement des pièces et/ou outils
3	Workpiece support, clamp and guide	Support, maintien et guidage des pièces
3.1	Table	Table
3.2	Cutting block	Contre-lame d'usure
3.3	Cutting fence	Guide de coupe
3.4	Pressure beam	Barre de compression
4	Toolholders and tools	Porte-outils et outils
4.1	Knife holder	Porte-couteaux
4.2	Knife	Couteau
5	Workheads and tool drives	Unité de travail et son entraînement
5.1	Motor	Moteur
5.2	Hydraulic power pack	Réducteur hydraulique
5.3	Gear box	Boîte de vitesses
5.4	Connecting rods	Bielle
5.5	Knife holder slide	Glissière du porte-couteaux
6	Controls	Commandes
6.1	Main switch	Commutateur général
6.2	Motion beam switch	Commutateur de descente du sommier
6.3	Pressure regulator	Commande de réglage de la pression
6.4	Pressure gauge	Manomètre
6.5	Fence adjustment, coarse	Commande d'approche du guide
6.6	Fence adjustment, fine	Commande de réglage précis du guide
7	Safety devices (examples)	Dispositifs de sécurité (exemples)
7.1	Two-hand control : pressure pad	Double commande de descente de la barre de compression
7.2	Two-hand control : knife	Double commande de descente des couteaux
7.3	Photo-electric screen cell	Cellule photoélectrique de protection
8	Miscellaneous	Divers
8.1	Electric enclosure	Armoire électrique
8.2	Main drive enclosure	Armoire des organes mécaniques
8.3	Cut marker beam	Indicateur lumineux de coupe
9	Free	Libre
10	Examples of work	Exemples de travail
10.1	Edge shearing of veneer packs	Massicotage d'un paquet de placage

5 Acceptance conditions and permissible deviations

5.1 Geometrical tests

No.	Diagram	Object	Permissible deviation	Measuring instruments	Observations and references in test code ISO/R 230
G1		<p>Checking of flatness of table :</p> <p>a) longitudinal straightness;</p> <p>b) transverse straightness</p>	<p>a) Position A 0,10 for a measuring length of 1000</p> <p>b) Positions B, C, D 0,20</p>	<p>Straightedge and feeler gauges</p>	<p>Clause 5.322</p>
G2		<p>Checking of straightness of knife holder</p>	<p>0,10 for a measuring length of 1000</p>	<p>Straightedge and feeler gauges</p>	<p>Clauses 5.222 and 5.212</p>