



Handläggande organ

Byggstandardiseringen, BST

Fastställt

1997-12-30

Utgåva

1

Sida

1 (1+38)

SIS FASTSTÄLLER OCH UTGER SVENSK STANDARD SAMT SÄLJER NATIONELLA, EUROPEISKA OCH INTERNATIONELLA STANDARDPUBLIKATIONER ©

## Construction and testing of drains and sewers

The European Standard EN 1610:1997 has the status of a Swedish Standard. This document contains the official English version of EN 1610:1997.

Swedish Standards corresponding to documents referred to in this Standard are listed in "Catalogue of Swedish Standards", issued by SIS. The Catalogue lists, with reference number and year of Swedish approval, International and European Standards approved as Swedish Standards as well as other Swedish Standards.

## Avlopp – Markförlagda ledningar – Läggningsanvisningar

Europastandarden EN 1610:1997 gäller som svensk standard. Detta dokument innehåller den officiella engelska versionen av EN 1610:1997.

Motsvarigheten och aktualiteten i svensk standard till de publikationer som omnämns i denna standard framgår av "Katalog över svensk standard", som ges ut av SIS. I katalogen redovisas internationella och europeiska standarder som fastställts som svenska standarder och övriga gällande svenska standarder.

ICS 13.060.30

Standarder kan beställas hos SIS som även lämnar allmänna upplysningar om svensk och utländsk standard.  
Postadress: SIS, Box 6455, 113 82 STOCKHOLM  
Telefon: 08 - 610 30 00. Telefax: 08 - 30 77 57

Upplysningar om **sakinnehållet** i standarden lämnas av BST.  
Telefon: 08 - 617 74 00. Telefax: 08 - 617 74 30

Prisgrupp R

Tryckt i februari 1998



EUROPEAN STANDARD  
NORME EUROPÉENNE  
EUROPÄISCHE NORM

**EN 1610**

September 1997

---

ICS 13.060.30

Descriptors: sanitation, pipelines, buried pipes, pressure pipes, junctions, definitions, materials, earthworks, coating processes, implementation, tests

English version

**Construction and testing of drains and sewers**

Mise en oeuvre et essai des branchements et  
collecteurs

Verlegung und Prüfung von  
Abwasserleitungen und -kanälen

This European Standard was approved by CEN on 18 May 1997.

CEN members are bound to comply with the CEN/CENELEC Internal Regulations which stipulate the conditions for giving this European Standard the status of a national standard without any alteration. Up-to-date lists and bibliographical references concerning such national standards may be obtained on application to the Central Secretariat or to any CEN member.

The European Standards exist in three official versions (English, French, German). A version in any other language made by translation under the responsibility of a CEN member into its own language and notified to the Central Secretariat has the same status as the official versions.

CEN members are the national standards bodies of Austria, Belgium, Czech Republic, Denmark, Finland, France, Germany, Greece, Iceland, Ireland, Italy, Luxembourg, Netherlands, Norway, Portugal, Spain, Sweden, Switzerland and United Kingdom.

**CEN**

European Committee for Standardization  
Comité Européen de Normalisation  
Europäisches Komitee für Normung

Central Secretariat: rue de Stassart 36, B-1050 BRUSSELS

<b>Content</b>	<b>Page</b>
<b>Foreword</b> .....	<b>4</b>
<b>1 Scope</b> .....	<b>5</b>
<b>2 Normative references</b> .....	<b>5</b>
<b>3 Definitions</b> .....	<b>5</b>
<b>4 General</b> .....	<b>7</b>
4.1 Concepts .....	7
4.2 Safeguarding design assumptions .....	7
<b>5 Construction components and materials</b> .....	<b>7</b>
5.1 General .....	7
5.2 Construction components .....	8
5.3 Materials used for embedment .....	8
5.4 Materials used for main backfill .....	9
<b>6 Excavation</b> .....	<b>9</b>
6.1 Trenches .....	9
6.2 Trench width .....	9
6.3 Trench stability .....	10
6.4 Trench bottom .....	11
6.5 Dewatering .....	11
<b>7 Embedment and support</b> .....	<b>11</b>
7.1 General .....	11
7.2 Bedding construction types .....	11
7.3 Special methods of bedding or support .....	12
<b>8 Installation</b> .....	<b>13</b>
8.1 Setting out .....	13
8.2 Delivery, handling and transportation on site .....	13
8.3 Storage .....	13
8.4 Lifting of components .....	13
8.5 Laying .....	14
8.6 Special constructions .....	15
8.7 Supporting and anchoring .....	15
8.8 Manholes and inspection chambers .....	15
<b>9 Connections to pipes and manholes</b> .....	<b>16</b>
9.1 General .....	16
9.2 Connection by junctions .....	16
9.3 Connection by connecting fittings .....	16
9.4 Connection by saddle fittings .....	16
9.5 Connection by welding .....	17
9.6 Connection to manholes and inspection chambers .....	17
<b>10 Testing during construction</b> .....	<b>17</b>
<b>11 Backfilling</b> .....	<b>17</b>
11.1 Compaction .....	17
11.2 Placement of the embedment .....	17
11.3 Placement of the main backfill .....	18
11.4 Removal of sheeting .....	18
11.5 Surface reinstatement .....	18

<b>12</b>	<b>Final inspection and/or testing of pipelines and manholes after backfilling</b>	<b>18</b>
12.1	Visual inspection	18
12.2	Leaktightness	19
12.3	Embedment and main backfill	19
<b>13</b>	<b>Procedures and requirements for testing gravity pipelines</b>	<b>19</b>
13.1	General	19
13.2	Testing with air (method "L")	19
13.3	Testing with water (method "W")	21
13.4	Testing individual joints	22
<b>14</b>	<b>Testing of pressure pipelines</b>	<b>22</b>
<b>15</b>	<b>Qualifications</b>	<b>22</b>
<b>Annex A (informative)</b>	<b>Dewatering</b>	<b>23</b>
<b>Annex B (informative)</b>	<b>Additional information to 5.3.3.1 on material properties</b>	<b>25</b>
<b>Annex C (informative)</b>	<b>Abstract from Council Directive of 17 September 1990 on the procurement procedures of entities operating in the water, energy, transport and telecommunication sectors</b>	<b>38</b>

## **Foreword**

**This European Standard has been prepared by Technical Committee CEN/TC 165 "Waste water engineering", the secretariat of which is held by DIN.**

**This European Standard shall be given the status of a national standard, either by publication of an identical text or by endorsement, at the latest by March 1998, and conflicting national standards shall be withdrawn at the latest by March 1998.**

**Annexes A, B and C are informative.**

**According to the CEN/CENELEC Internal Regulations, the national standards organizations of the following countries are bound to implement this European Standard: Austria, Belgium, Czech Republic, Denmark, Finland, France, Germany, Greece, Iceland, Ireland, Italy, Luxembourg, Netherlands, Norway, Portugal, Spain, Sweden, Switzerland and the United Kingdom.**

## 1 Scope

This European Standard is applicable to the construction and testing of drains and sewers normally buried in the ground and normally operating under gravity.

The construction of pipelines operating under pressure is covered by this European Standard together with prEN 805 as appropriate.

This European Standard is applicable to drains and sewers laid in trenches, under embankments or above ground. Trenchless construction will be covered in prEN 12889. Additionally other local or national regulations should be taken into account, e.g. concerning health and safety, pavement reinstatement and requirements for leaktightness testing etc.

## 2 Normative References

This European Standard incorporates by dated or undated reference, provisions from other publications. These normative references are cited at the appropriate places in the text and the publications are listed hereafter. For dated references, subsequent amendments to or revisions of any of these publications apply to this European Standard only when incorporated in it by amendment or revision. For undated references the latest edition of the publication referred to applies.

EN 476

General requirements for components used in discharge pipes, drains and sewers for gravity systems

EN 752-3

Drain and sewer systems outside buildings – Part 3: Planning

prEN 805

Water supply – Requirements for external systems and components

EN 1295-1

Structural design of buried pipelines under various conditions of loading – Part 1: General requirement

prEN 12889

Trenchless construction and testing of drains and sewers

## 3 Definitions

For the purposes of this standard the following definitions including figure 1 apply:

**3.1 bedding:** Part of the construction which supports the pipe between the trench bottom and the sidefill or initial backfill. The bedding consists of upper and lower bedding. In the case of the pipe laid on natural trench bottom, the trench bottom is the lower bedding.

**3.2 compaction layer thickness:** Thickness of each new layer of fill material prior to its compaction.

**3.3 depth of cover:** Vertical distance from the top of the pipe barrel to the surface.

**3.4 embedment:** Fill around the pipe including bedding, sidefill and initial backfill.

**3.5 initial backfill:** Layer of fill material immediately above the crown of the pipe.

**3.6 main backfill:** Fill between the top of the embedment and the level of the ground, top of embankment or, when applicable, the bottom of the road or railway construction.

**3.7 minimum trench width:** Minimum distance needed for safety and construction between the trench walls at the top of the lower bedding or when applicable between the trench supports at any level.

**3.8 native soil:** Soil from the excavation of the trench.

**3.9 nominal size (DN):** Numerical designation of size of component, which is a convenient integer approximately equal to a manufacturing dimension in mm. This may apply to either the internal diameter (DN/ID) or the external diameter (DN/OD). (EN 476)

**3.10 pipeline:** Assembly of pipes, fittings and joints between manholes or other structures.

**3.11 prefabricated component:** Product manufactured separately from the installation process, generally in circumstances where a product standard applies and/or a manufacturer's quality control is in place.

**3.12 sidefill:** Material between bedding and initial backfill.

**3.13 trench depth:** Vertical distance from the bottom of the trench to the surface.

- 1 Surface
- 2 Bottom of road or railway construction, if any
- 3 Trench walls
- 4 Main backfill (3.6)
- 5 Initial backfill (3.5)
- 6 Sidefill (3.12)
- 7 Upper bedding
- 8 Lower bedding
- 9 Trench bottom
- 10 Depth of cover (3.3)
- 11 Depth of bedding (3.1)
- 12 Depth of embedment (3.4)
- 13 Trench depth (3.13)

- a* Depth of lower bedding
- b* Depth of upper bedding
- c* Depth of initial backfill

$$b = k \times OD \text{ (see clause 7)}$$

where:

*k* is a dimensionless factor relating the upper bedding thickness, *b*, to OD  
OD is the outside diameter of pipe in mm

NOTE 1: For minimum values of *a* and *c* see clause 7.

NOTE 2: *k* × OD replaces the designation of bedding angle in some existing national standards. The bedding angle is not the bedding reaction angle used in structural design.

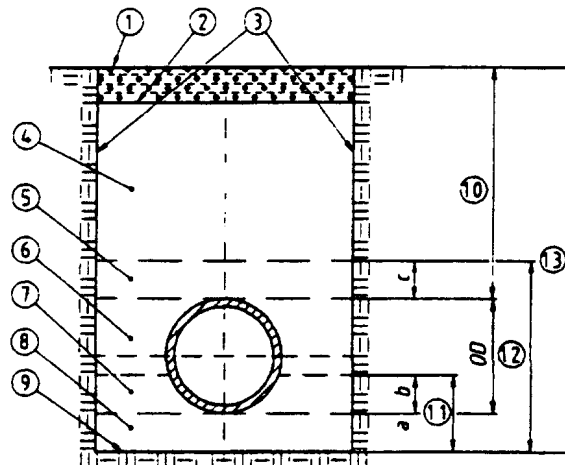


Figure 1: Illustration of definitions



The same definitions apply for trenches with sloping sides and for embankments where appropriate.

## **4 General**

### **4.1 Concepts**

Pipelines and manholes are essentially engineering structures in which the combined performance of construction components, bedding, and fill constitute the basis for stability and safety in operation. The pipes, fittings and joint materials supplied, together with the work carried out at site, such as the pipe bedding, the jointing of pipes, the sidefilling and backfilling are all important factors in achieving a structure with adequate performance.

### **4.2 Safeguarding design assumptions**

The strength of a pipeline shall be determined, decided or specified before construction work is undertaken in accordance with EN 752-3 and EN 1295-1.

In the execution of the work it should be ensured that the assumptions made in the design are safeguarded or adapted to changed conditions.

The design assumptions are affected in particular by any variation of the following:

- trench width compared to the design width;
- trench depth compared to the design depth;
- trench support system and the effect of its removal;
- degree of compaction of the embedment;
- degree of compaction of main backfill;
- pipe support and trench bottom conditions;
- construction traffic and temporary loads;
- soil types and soil parameters (e. g. subsoil, trench walls, backfill);
- shape of trench (e. g. stepped trench, trench with sloping walls);
- ground and soil condition (e. g. frost and thaw, rain, snow, flooding);
- ground water table;
- additional pipelines in the same trench.

NOTE: The above list is not exhaustive.

## **5 Construction components and materials**

### **5.1 General**

Construction components and materials shall conform to national standards, transposing European Standards as available, or to European technical approvals or in the absence of these the components and materials shall comply with the requirements of the specifier.

## 5.2 Construction components

Construction components shall comply with 5.1.

Any supplementary instructions of the manufacturer shall be observed.

## 5.3 Materials used for embedment

### 5.3.1 General

The materials used for embedment shall comply with the appropriate subclauses of 5.3 in order to be capable of providing permanent stability and load bearing capacity for the pipeline buried in the ground. Such materials shall not be detrimental to the pipe or pipe materials or the groundwater.

Frozen materials shall not be used.

Materials used for embedment shall conform with the design requirements. The materials may either be native soil (see 5.3.2) if proved to be suitable or imported materials (see 5.3.3). Materials for bedding should contain no particles with sizes above

- 22 mm for  $DN \leq 200$ ,
- 40 mm for  $DN > 200$  up to  $DN \leq 600$ .

### 5.3.2 Native soil

Requirements for re-use of native soil are:

- conformity with design requirements;
- compactability if specified;
- freedom from materials detrimental to the pipe (e. g. "oversized" particles – depending on pipe material, wall thickness and diameter –, tree roots, rubbish, organic material, clay lumps > 75 mm, snow and ice).

Native soil meeting the requirements of 5.3.3.1 or 5.3.3.3 is considered suitable.

### 5.3.3 Imported materials

The following materials which may include recycled materials are suitable.

#### 5.3.3.1 Granular materials

Granular materials include:

- single size granular material;
- graded granular material;
- sand;
- all-in aggregates;
- crushed aggregates.

Guidance on granular materials is given in annex B.

### 5.3.3.2 Hydraulically bonded materials

Hydraulically bonded materials include:

- soil cement;
- light weight concrete;
- lean concrete;
- unreinforced concrete;
- reinforced concrete.

They shall be as specified in the design.

### 5.3.3.3 Other materials

Materials other than those described in 5.3.3.1 to 5.3.3.2 may be used for embedment if their suitability as defined under 5.3.1 is proved. Natural or artificial substances which may cause damage to the pipeline and manholes are unsuitable.

Environmental consequences should be considered.

## 5.4 Materials used for main backfill

Materials used for main backfill shall conform with the design requirements.

Materials specified in 5.3 may be used for main backfill.

The maximum size of stones in excavated material used for backfill should be 300 mm or the thickness of the initial backfill or half of the compaction layer thickness, whichever is the smallest. The maximum size may be further limited depending on soil conditions, groundwater and pipe material. Special conditions may be specified for rocky areas.

## 6 Excavation

### 6.1 Trenches

Trenches shall be designed and excavated in such a way as to ensure correct and safe installation of pipelines.

If construction access is required to the outside face of underground structures, e. g. manholes, a protected minimum working space 0,50 m wide shall be provided.

Where two or more pipes are being laid in the same trench or embankment, a minimum horizontal working space shall be observed for the distance between the pipelines. If not otherwise specified it shall be: 0,35 m for pipes up to and including DN 700 and 0,50 m for pipes greater than DN 700.

Where necessary appropriate safety measures for other supply pipelines, drains and sewers, constructions or surfaces shall be observed to protect these against detrimental effects.

### 6.2 Trench width

#### 6.2.1 Maximum trench width

The trench width shall not exceed the maximum width specified in the structural design.

If this is not possible, the matter shall be referred to the designer.